

Membranas extraembrionarias

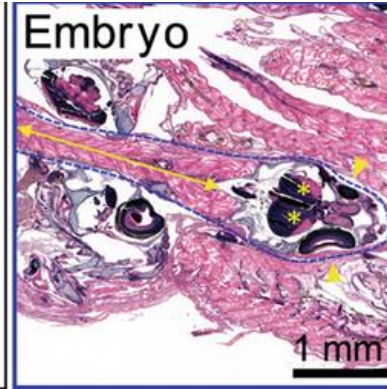
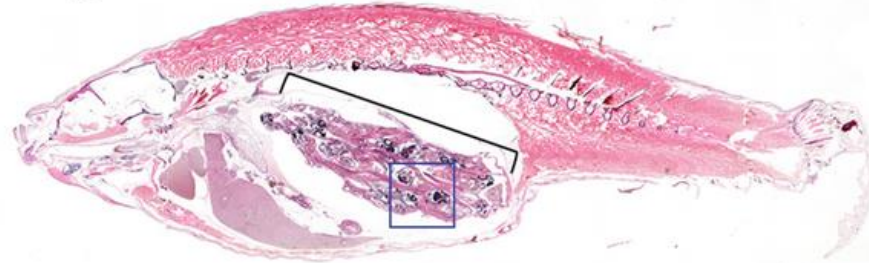


Placenta

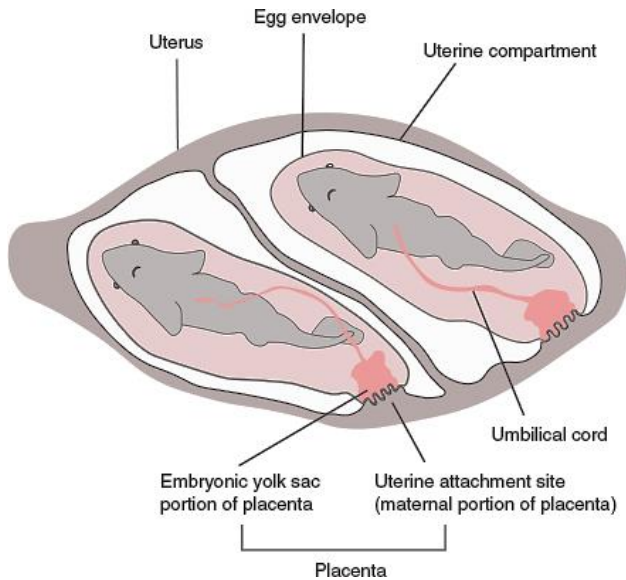
Órgano constituido por tejidos materno y fetal para el intercambio de sustancias nutritivas



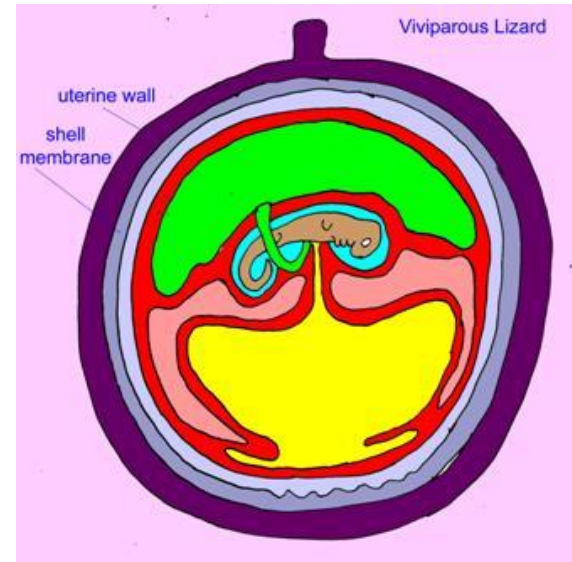
Pregnant female



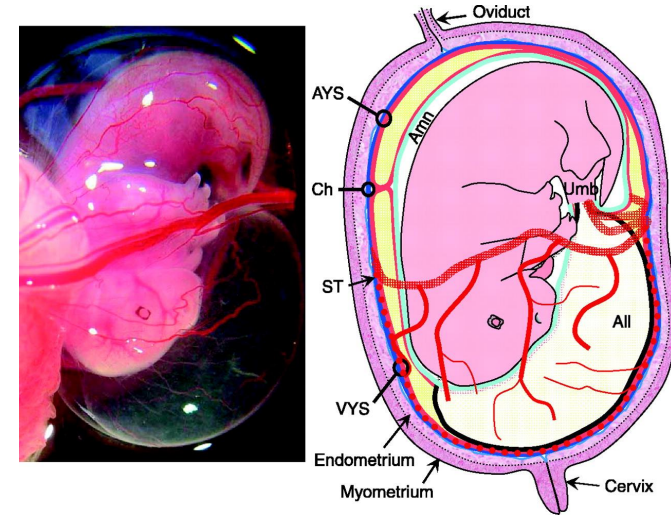
Teleósteos: gestación intrafolicular 5 mm



Elasmobranquios



Reptiles escamados



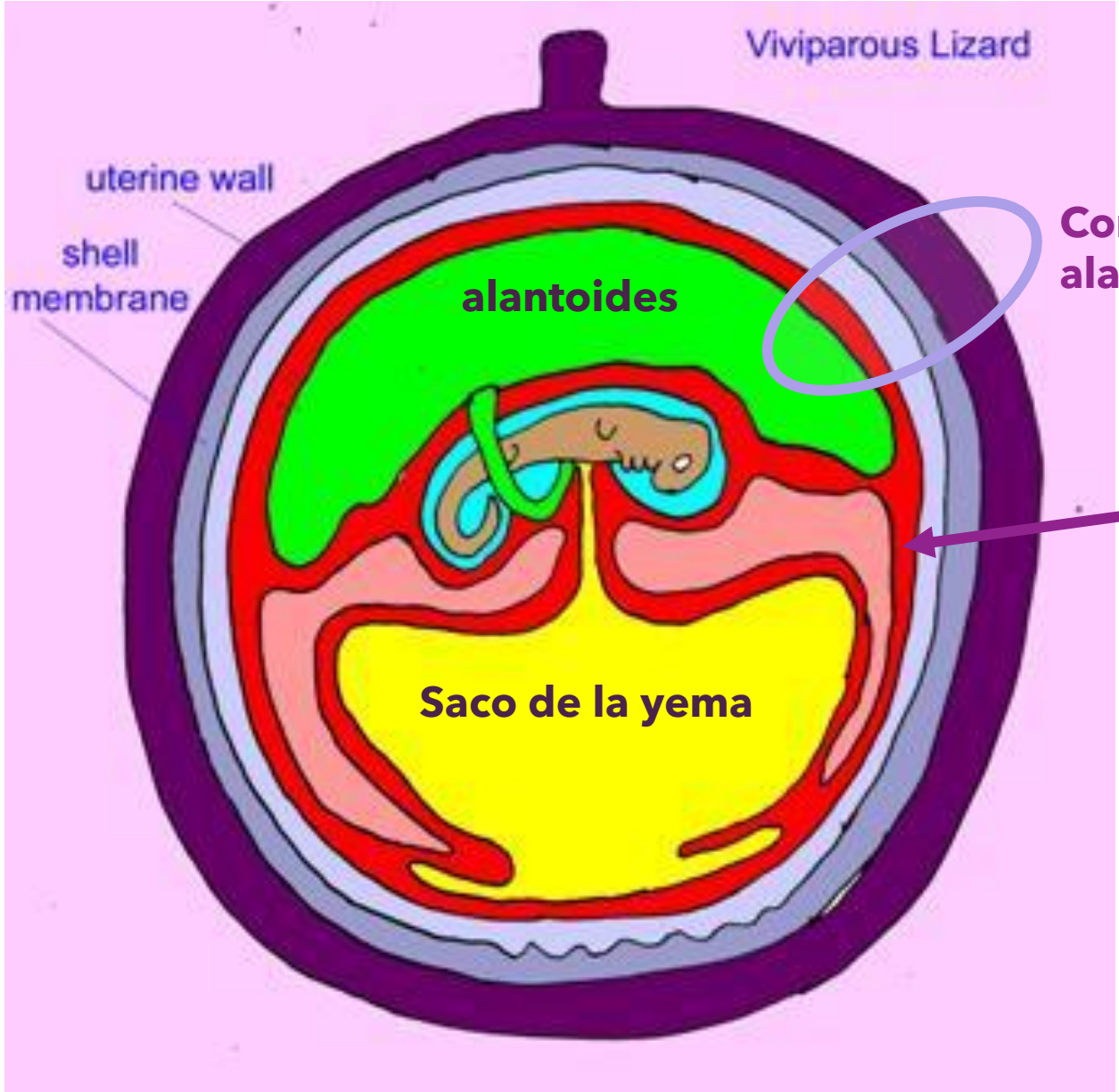
Mamíferos therios





AMNIOTAS

AMNIOTAS

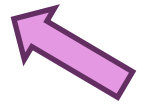


Hemisferio embrionario

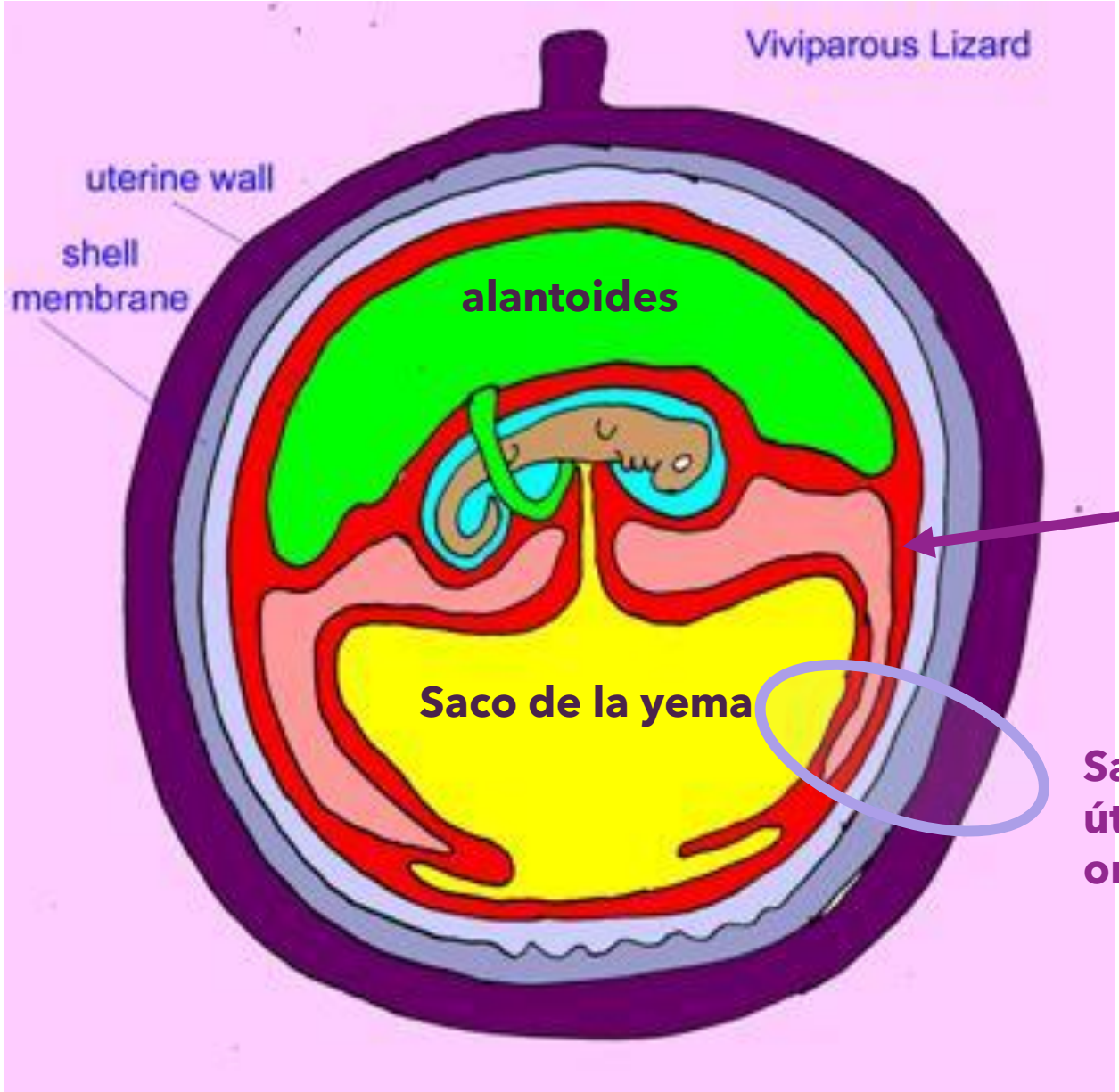
Hemisferio abembriónico

Corioalantoides + útero: alantoplacenta

corion



AMNIOTAS



Hemisferio embrionario

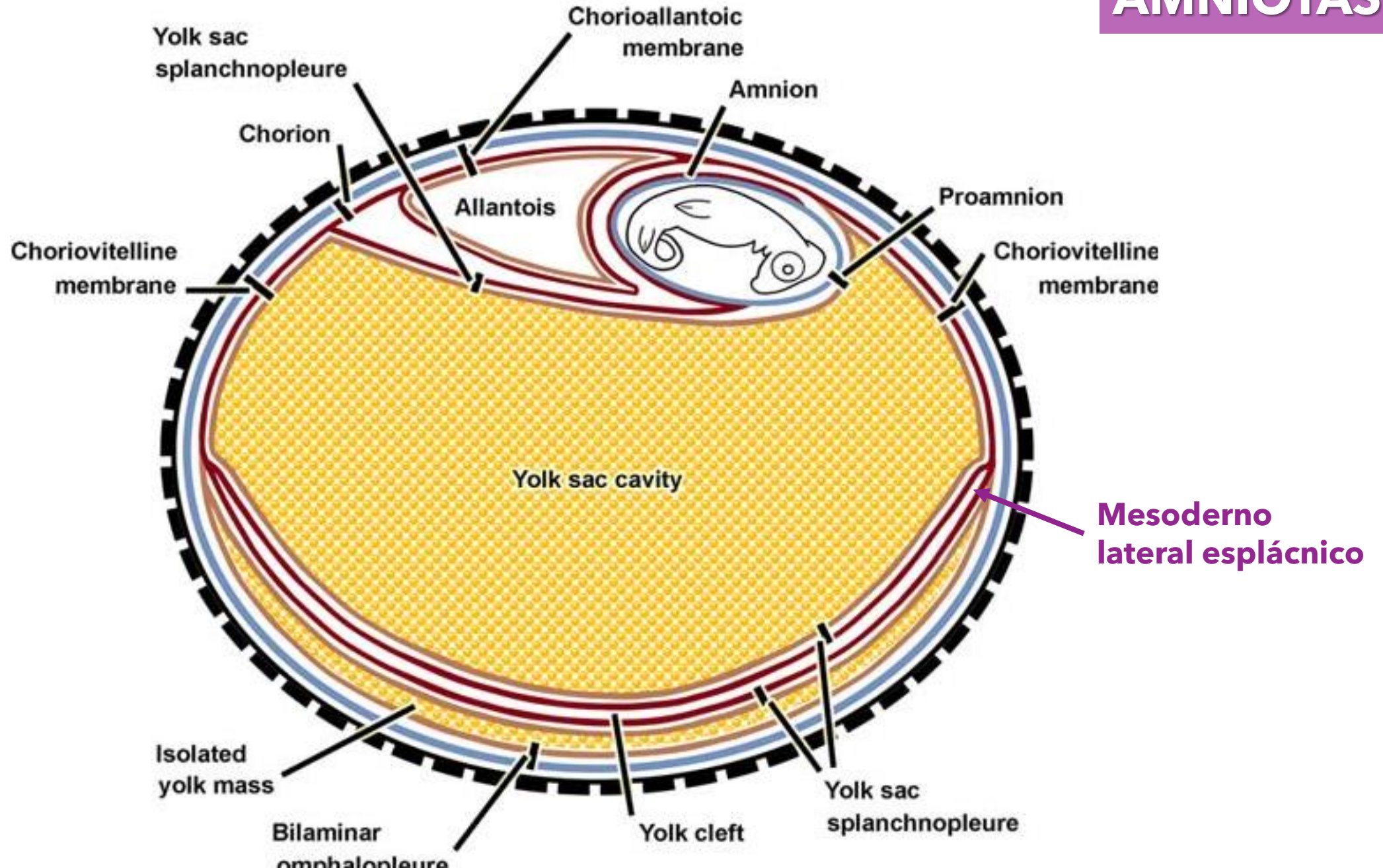
Hemisferio abembriónico

corion

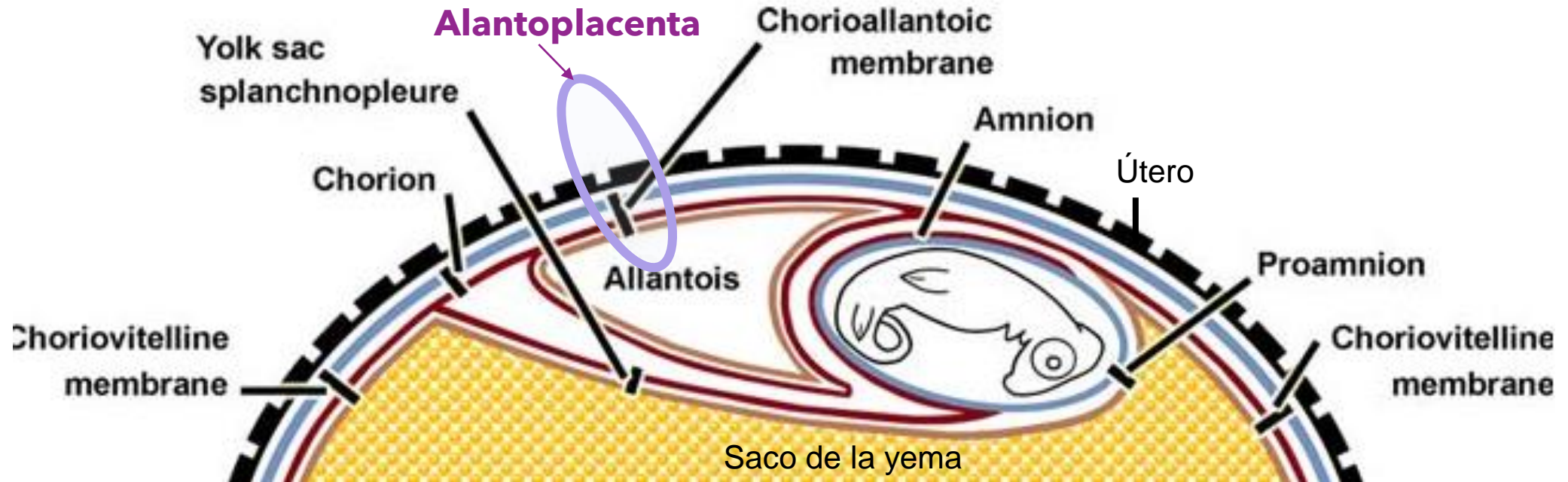
Saco de la yema y corion + útero: omfaloplacenta

REPTILES ESCAMADOS

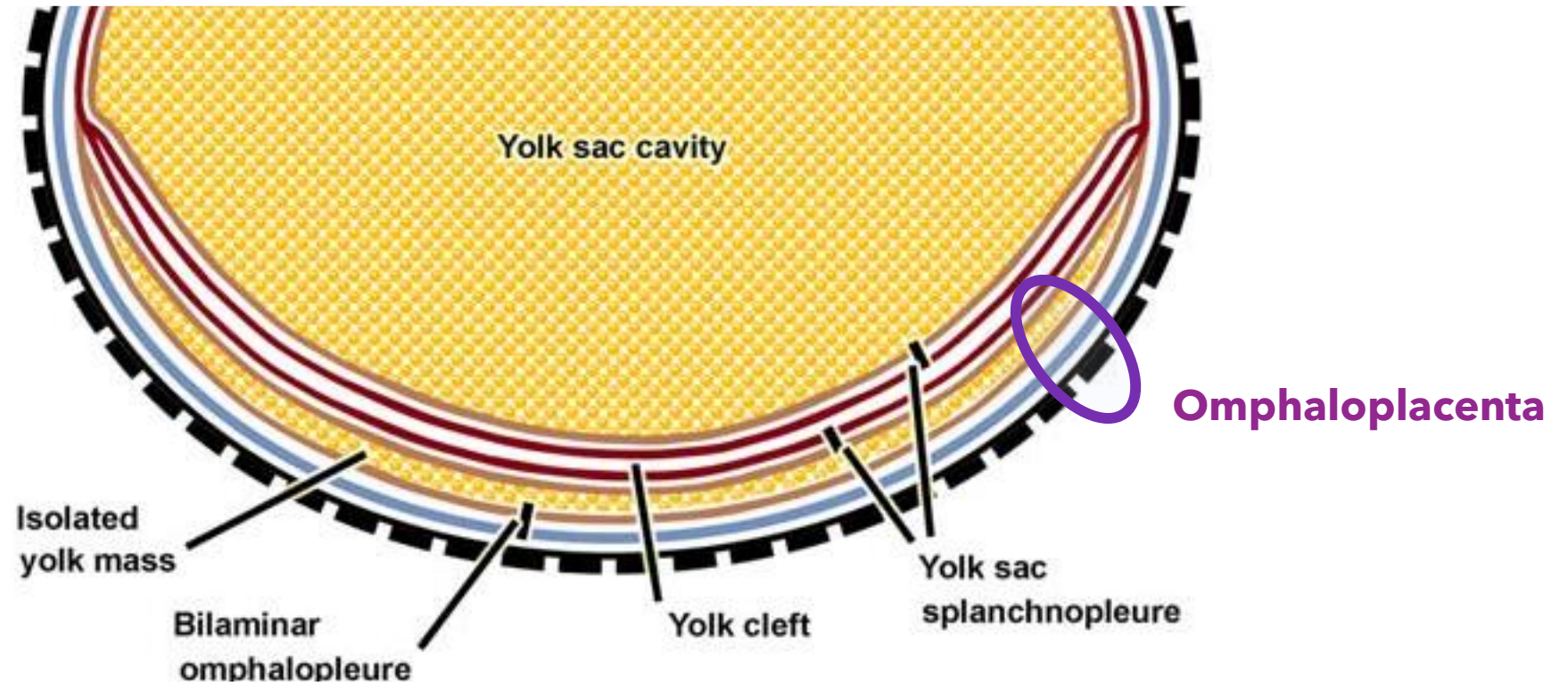
AMNIOTAS



Hemisferio embrionario

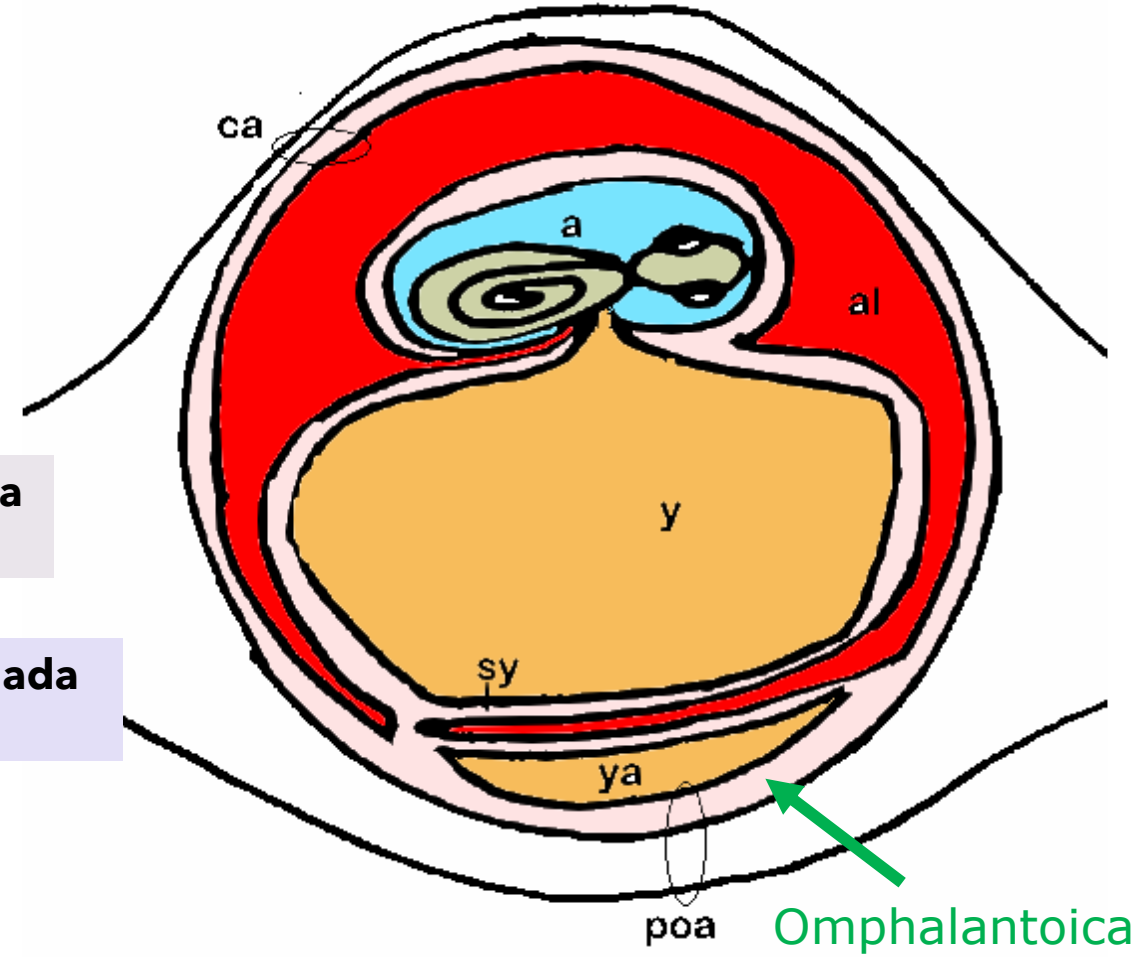
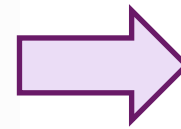
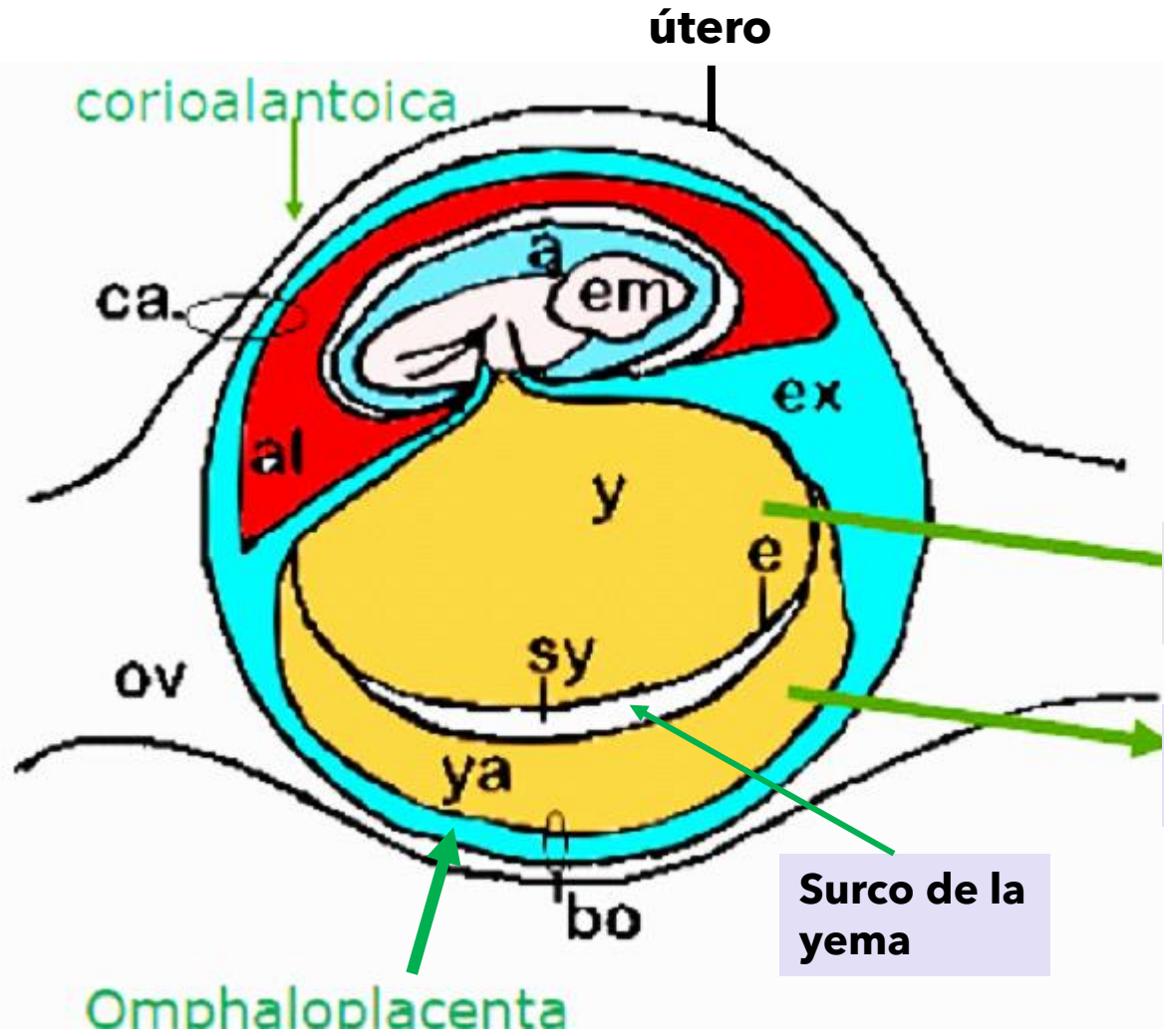


Hemisferio
abembriónico



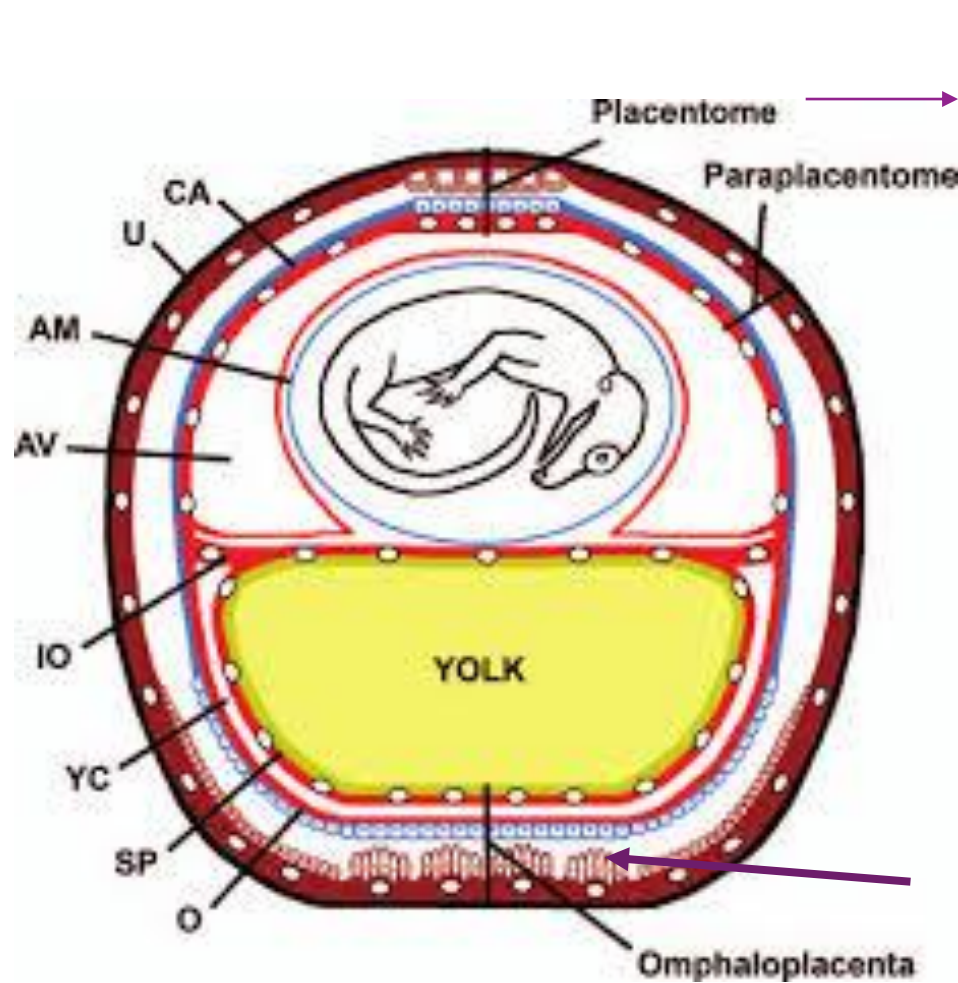
REPTILES ESCAMADOS

AMNIOTAS



REPTILES ESCAMADOS

AMNIOTAS



Placentoma: especialización de la placenta corioalantoica para intercambio de nutrientes

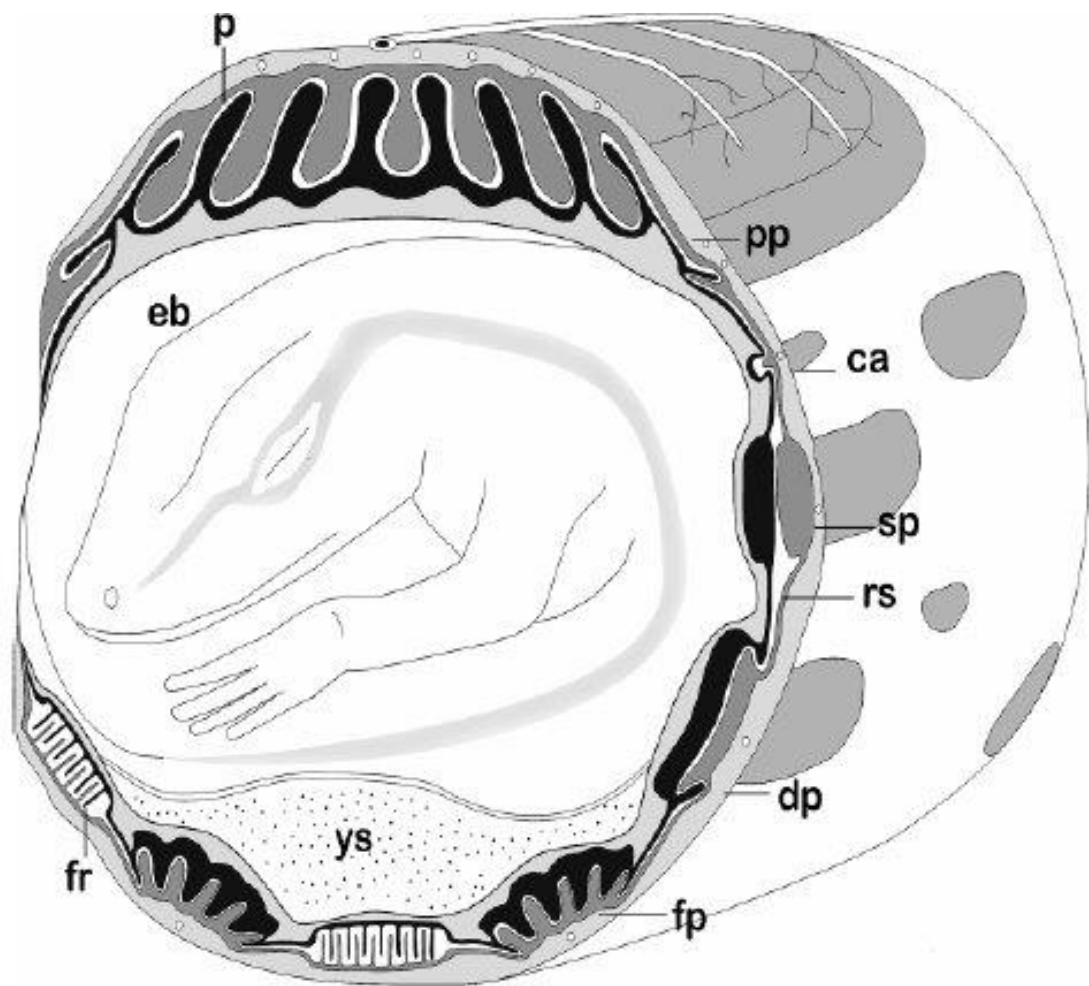
Pseudemoia entrecasteauxii



especialización de la placenta coriovitelina para intercambio de nutrientes

REPTILES ESCAMADOS

AMNIOTAS



P, placentoma
Pp, paraplastoma
Ca, areolas coriónicas
sp, placas de absorción simples
Rs, segmentos respiratorios
Dp, placas de absorción delimitadas
Fp, placas de absorción plegadas
Fr, regiones altamente plegadas
Ys, saco de la yema



Mabuya sp.

placentoma

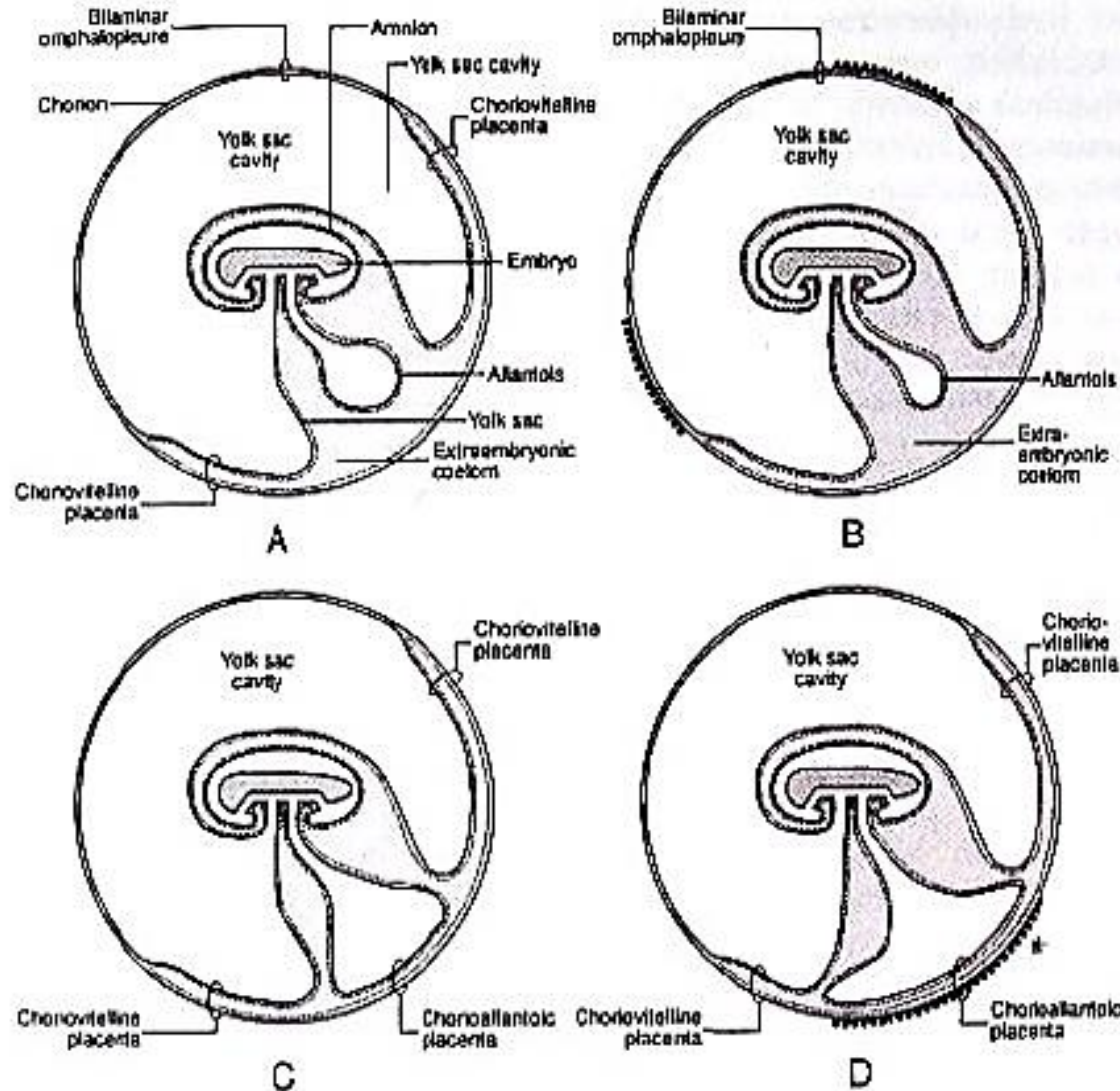


Placas de absorción



MARSUPIALES

AMNIOTAS



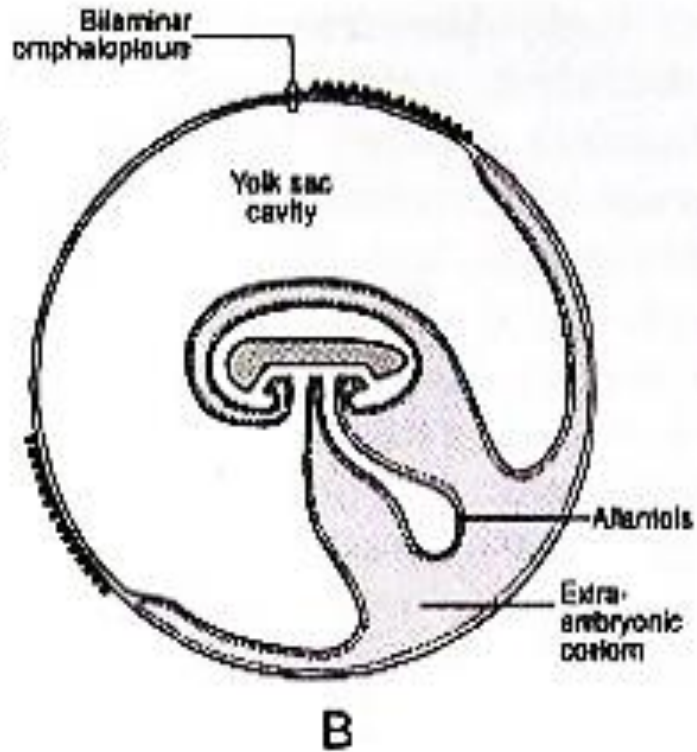
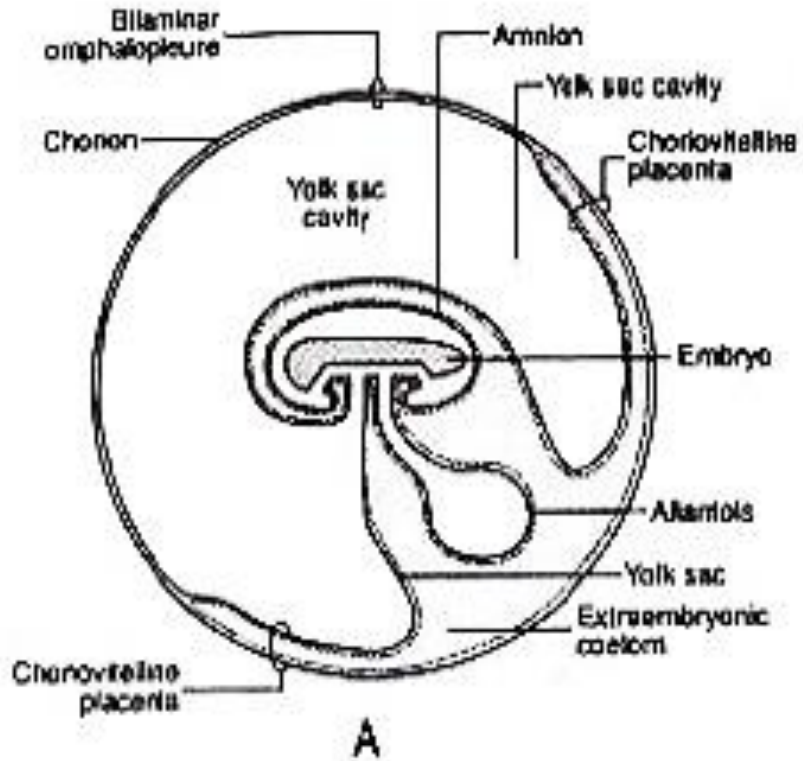
Placenta coriovitelina exclusivamente

Placenta corioalantoica y coriovitelina

Figure 10.4 Organization of the embryonic component of marsupial placentae. A, *Didelphis* (after McCrady, 1938); B, *Dasyurus viverrinus* (after Hill, 1900); C, *Phascogaleos* (after Tyndale-Biscoe, 1973); and D, *Perameles* (after Hill, Mossman).

MARSUPIALES

AMNIOTAS

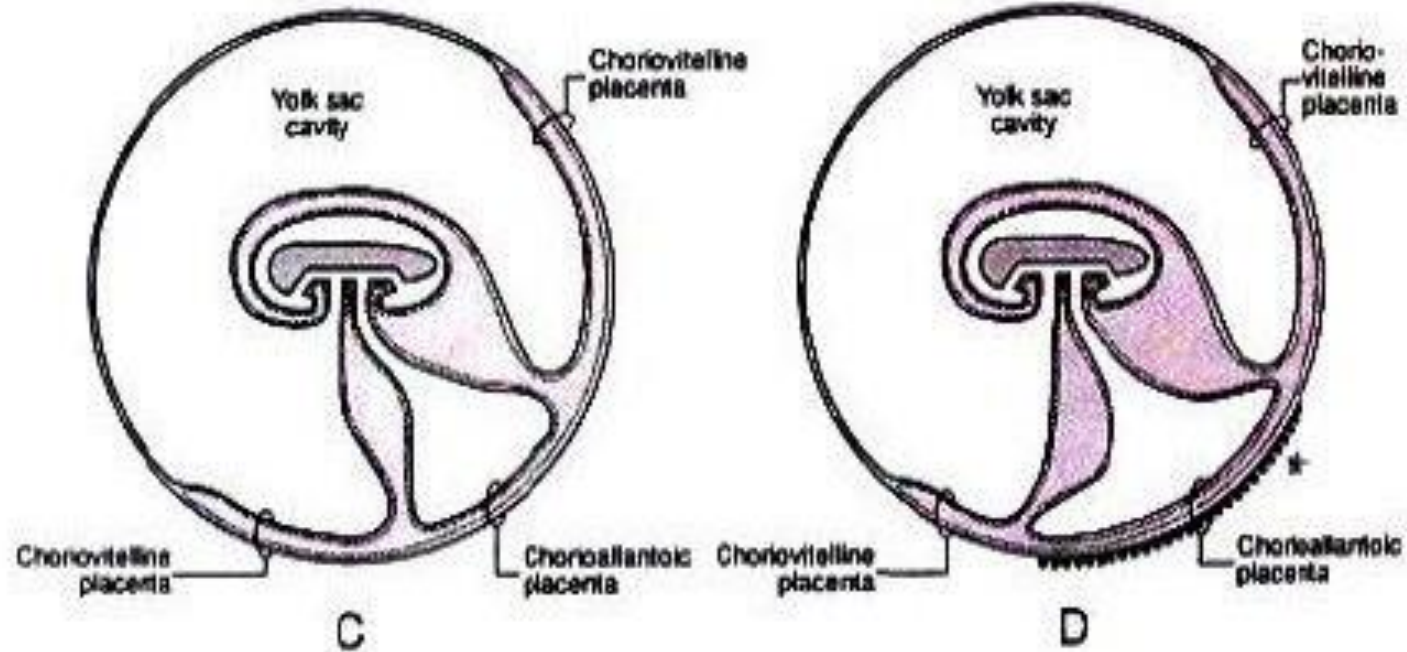


Placenta coriovitelina exclusivamente



MARSUPIALES

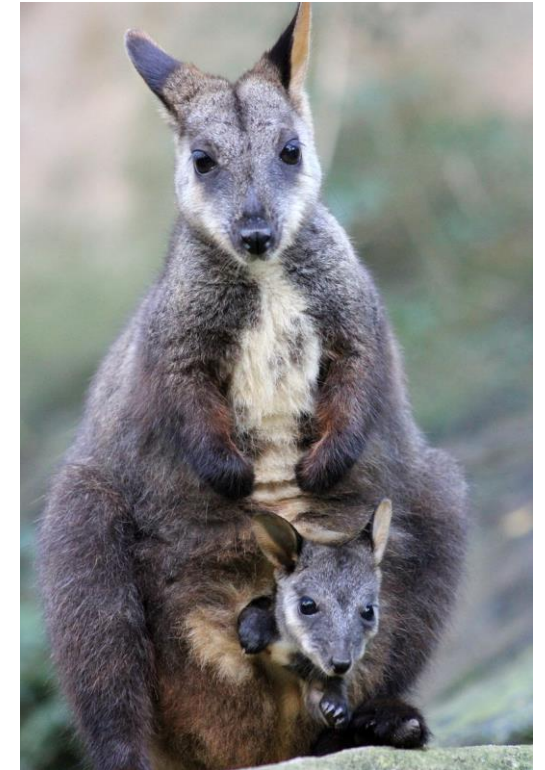
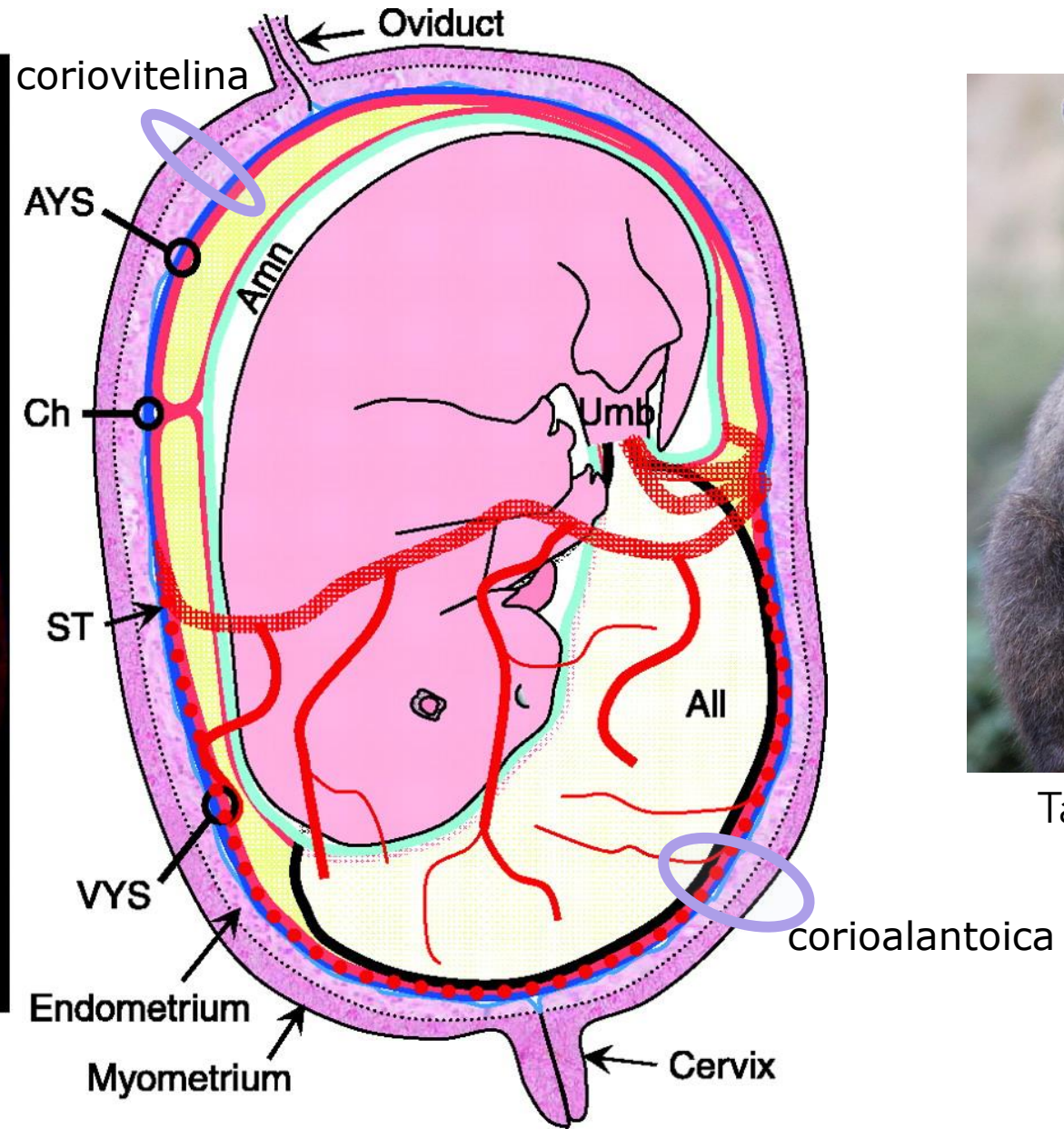
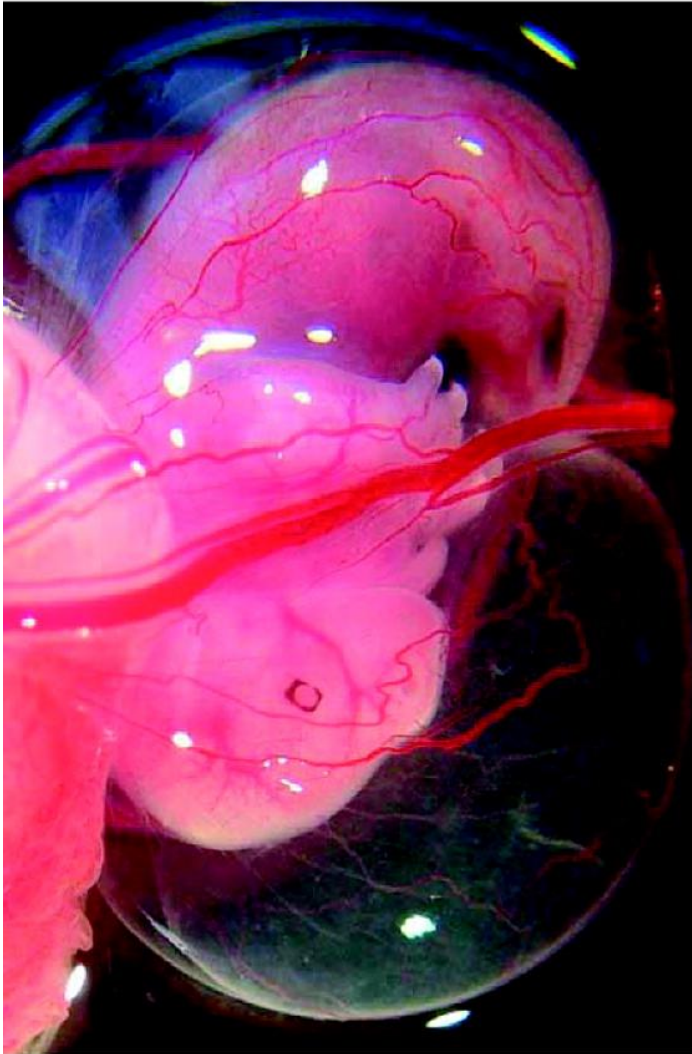
AMNIOTAS



Placenta corioalantoica y coriovitelina

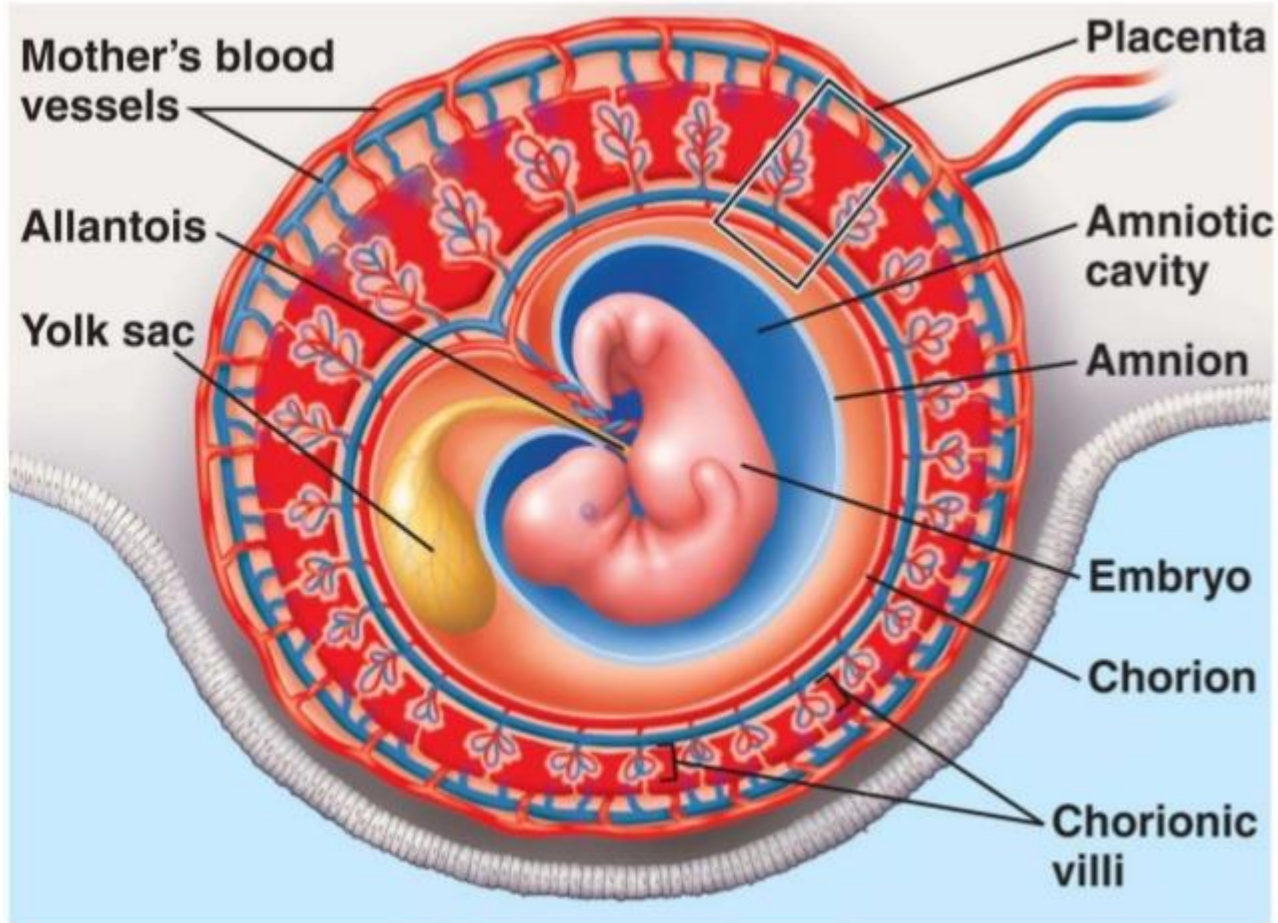


AMNIOTAS

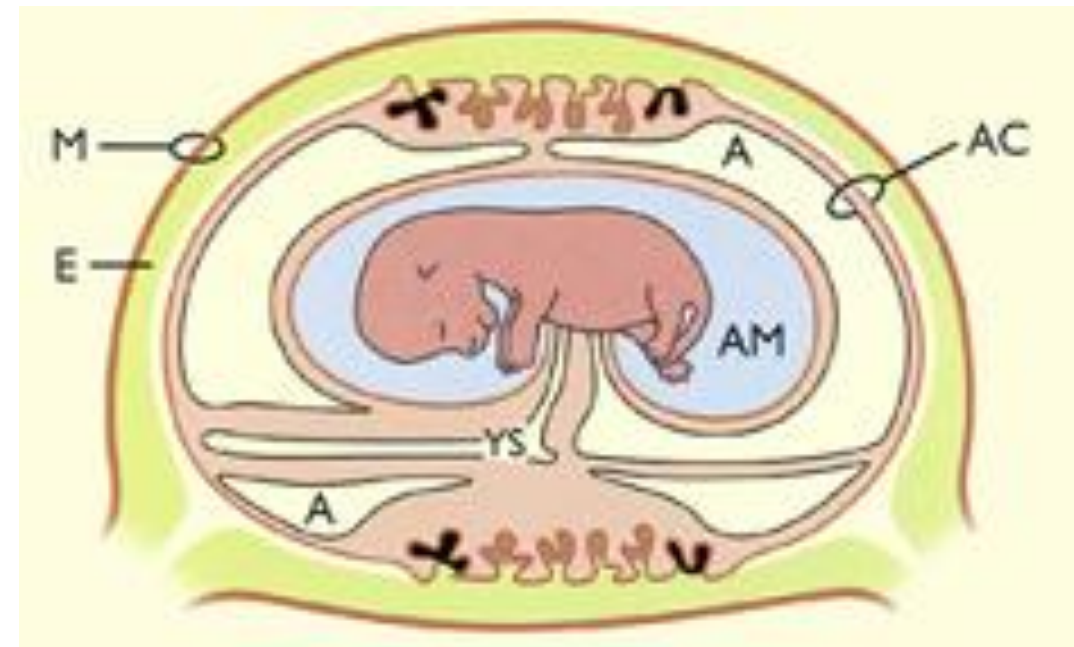


Tammar wallaby

EUTHERIOS



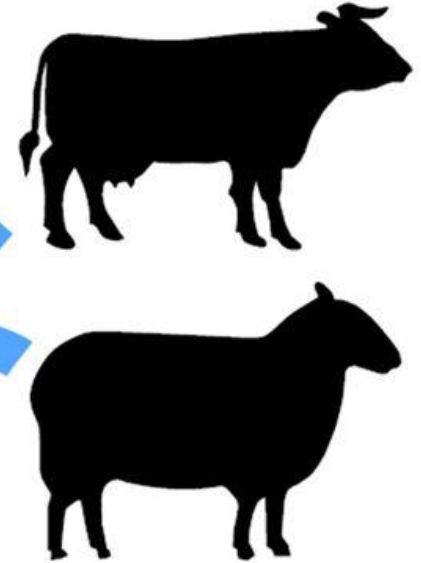
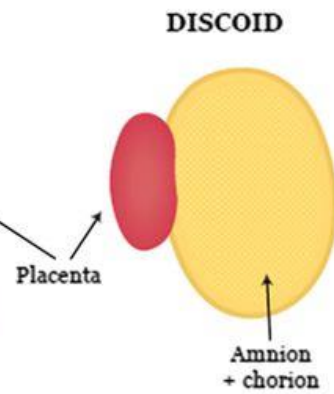
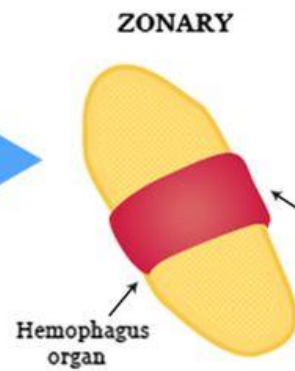
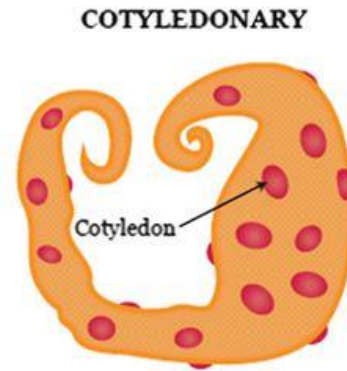
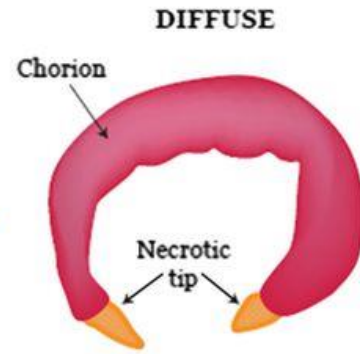
AMNIOTAS

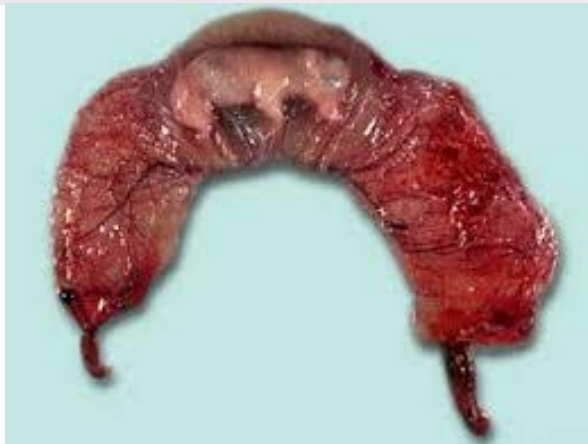


Placenta corioalantoica

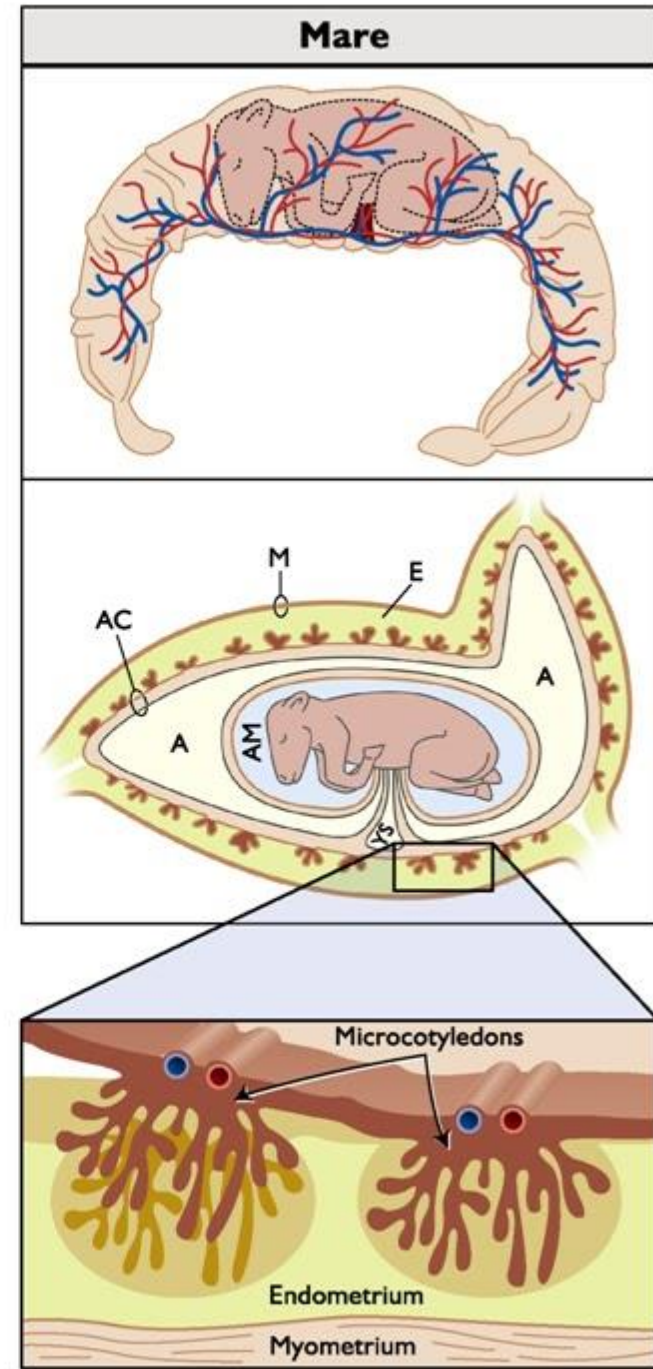
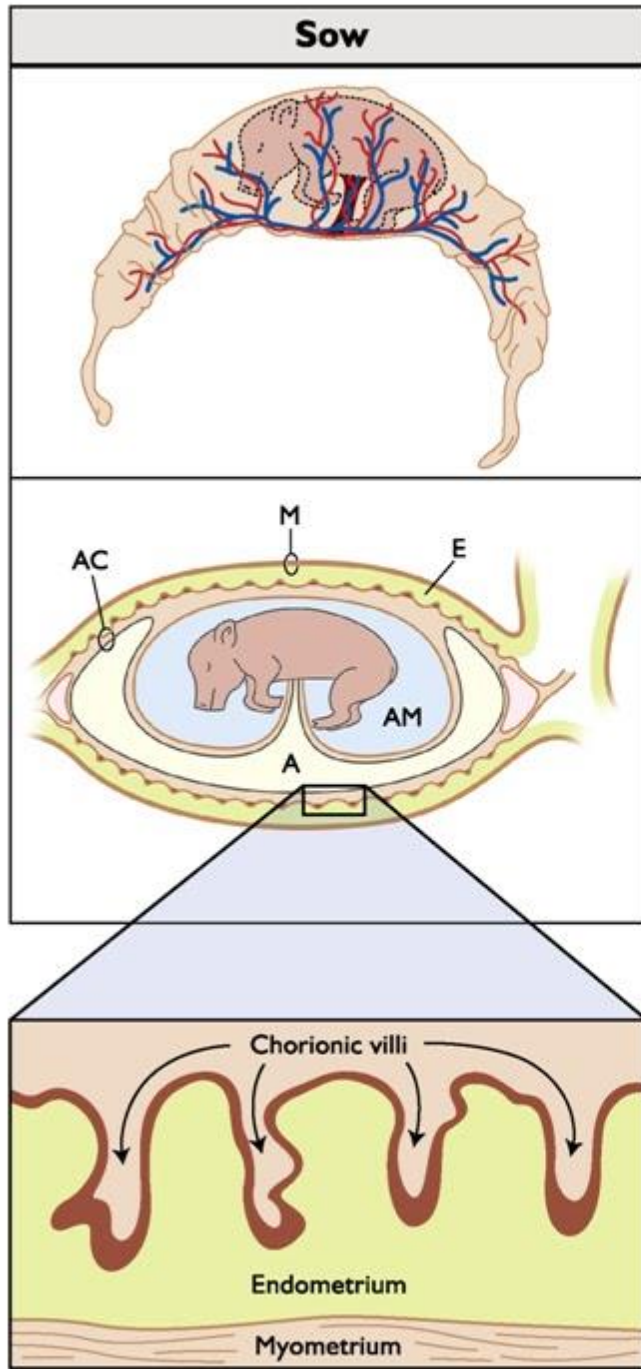
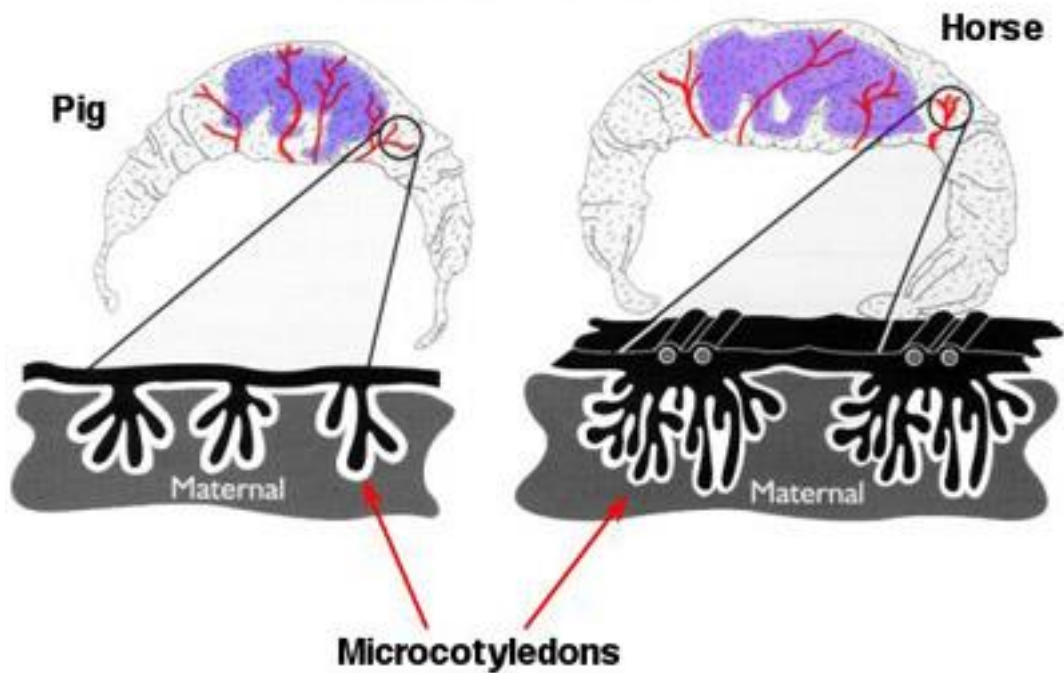
EUTHERIOS

AMNIOTAS





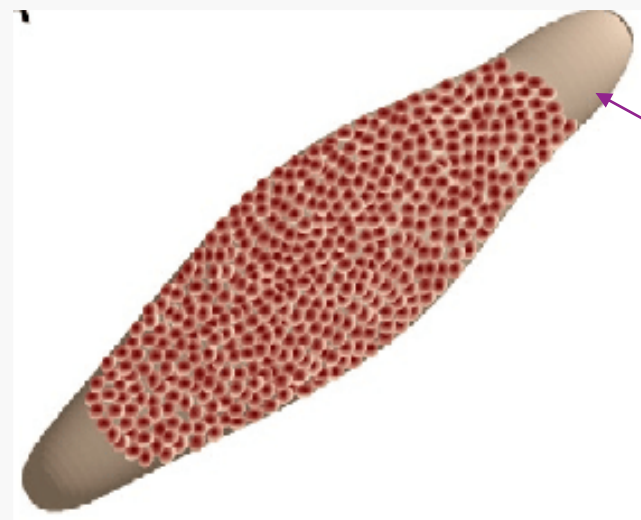
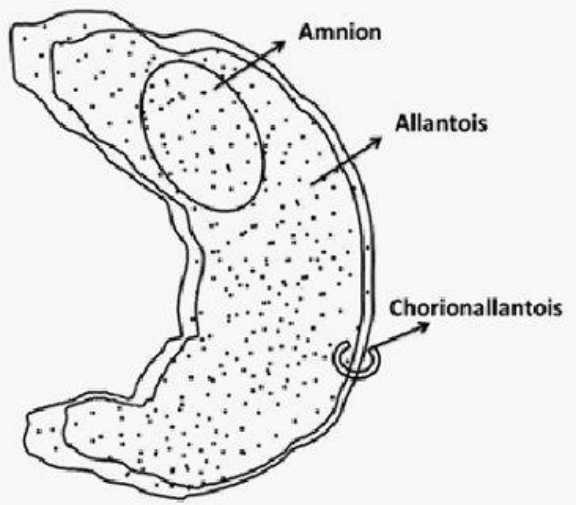
Diffuse Placenta



Placenta difusa

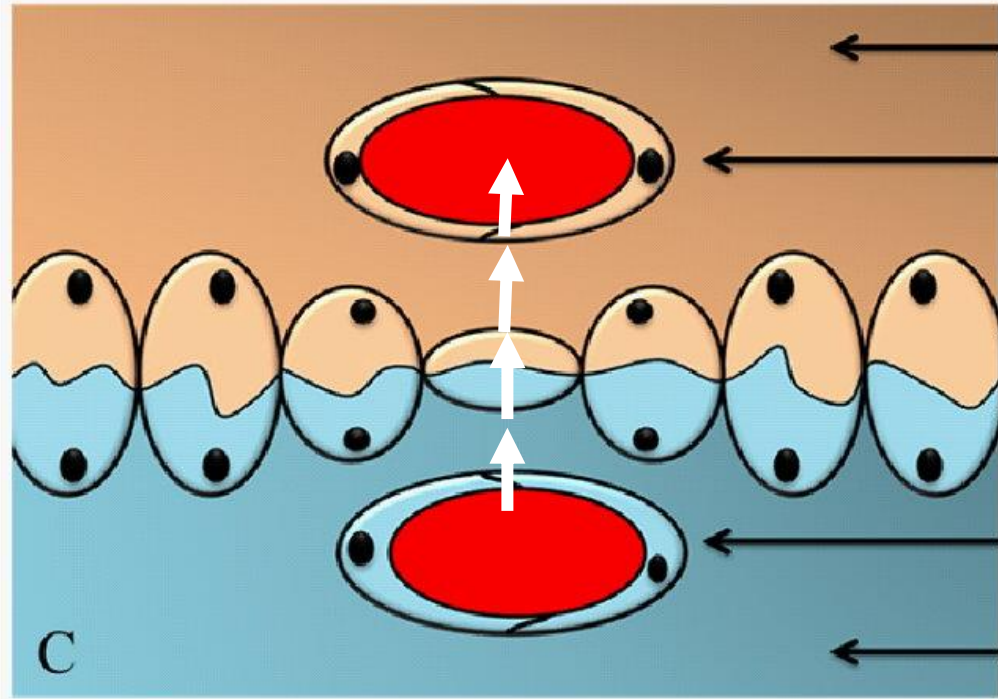


A



oviducto

Epitelio corial



Connective Tissue

Fetal Blood Vesel

Fetal Tissue

Trophectoderm

Utherine Eptelium

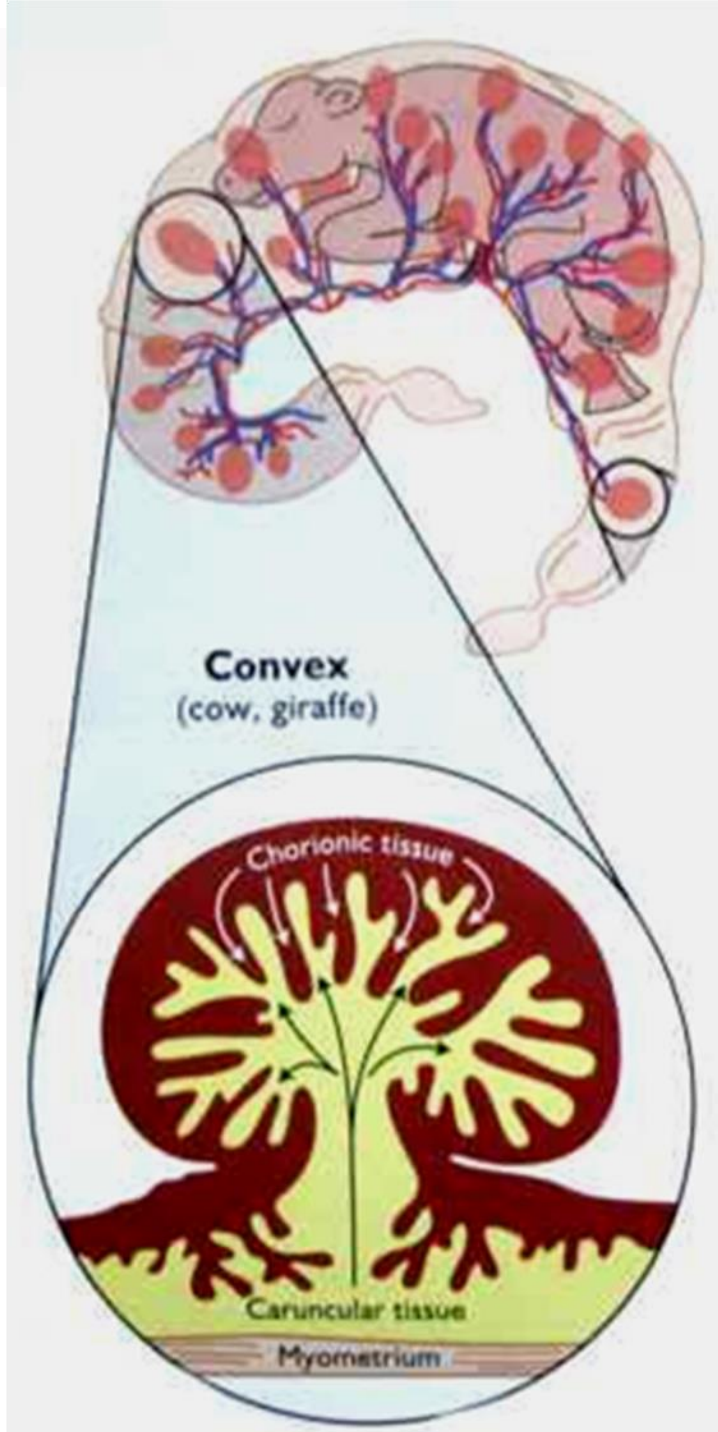
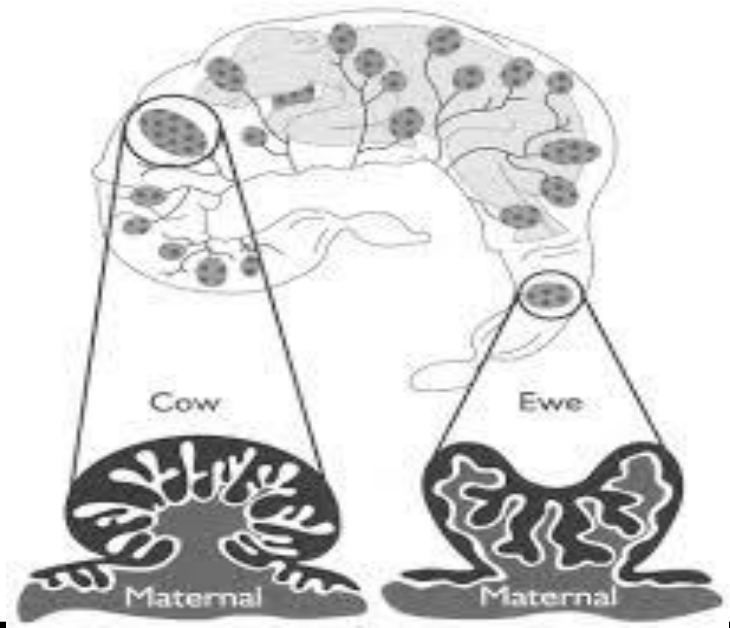
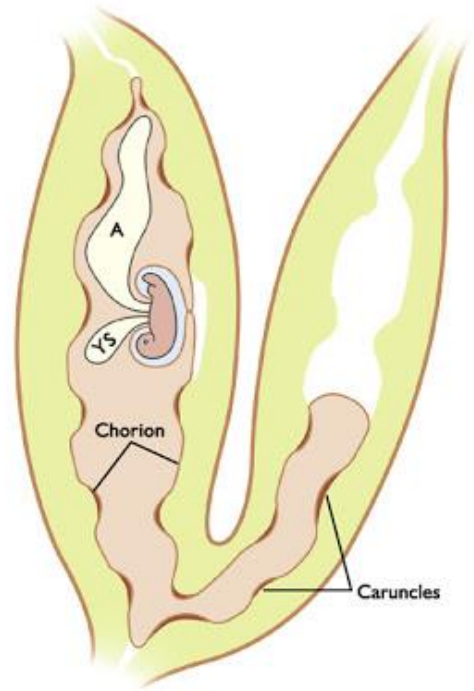
Maternal Blood Vesel

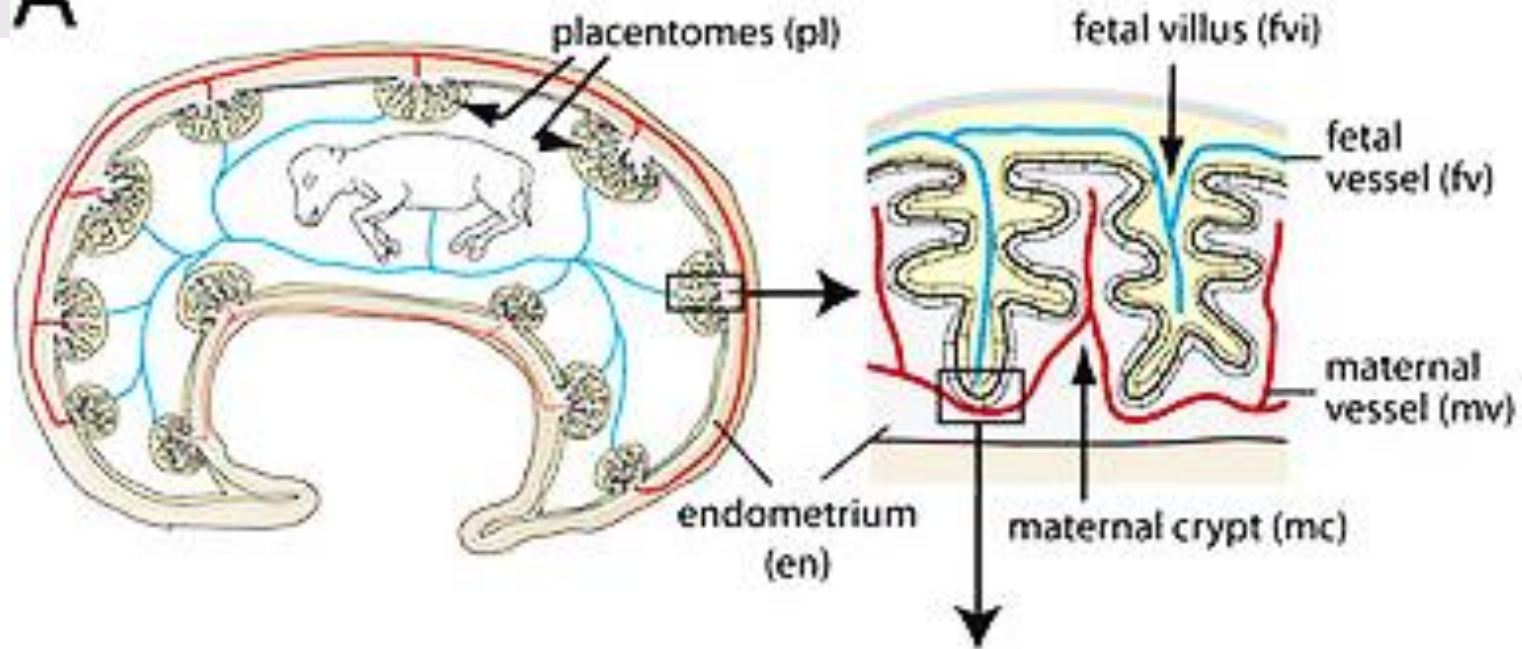
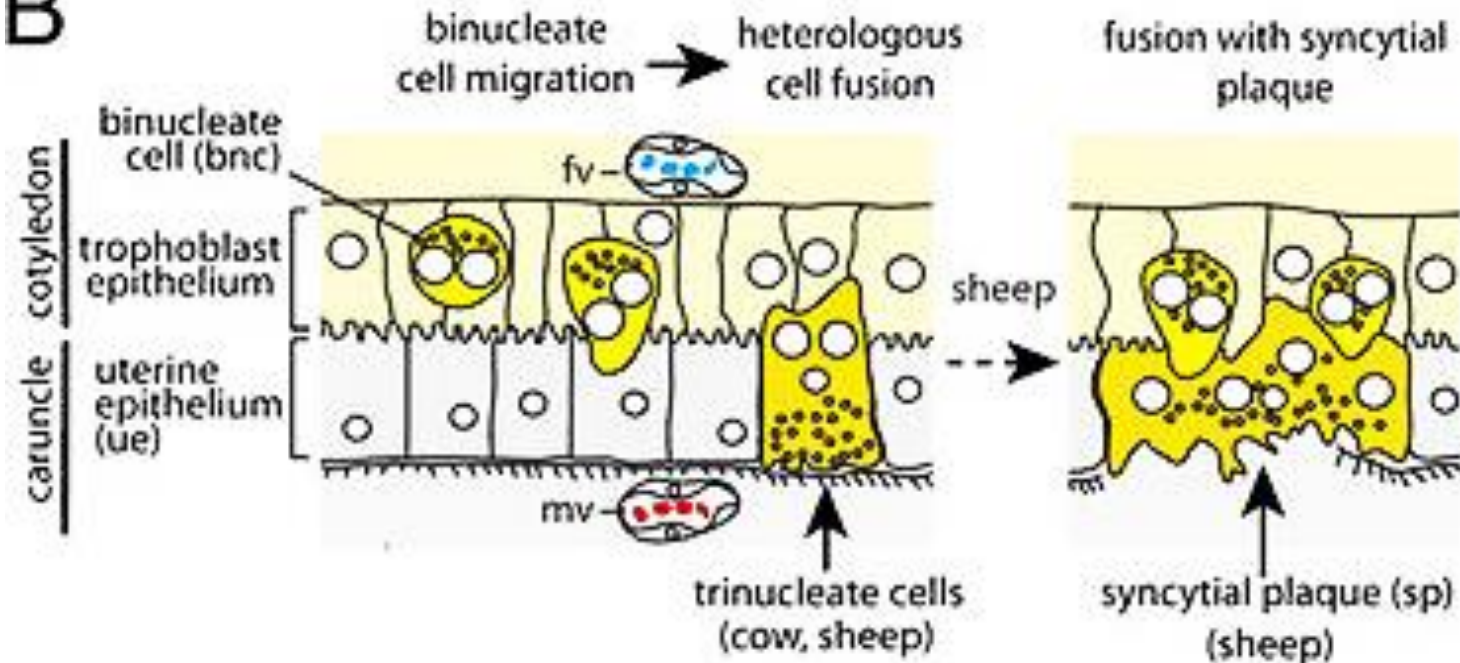
Maternal Tissue

Connective Tissue

Cotyledonary

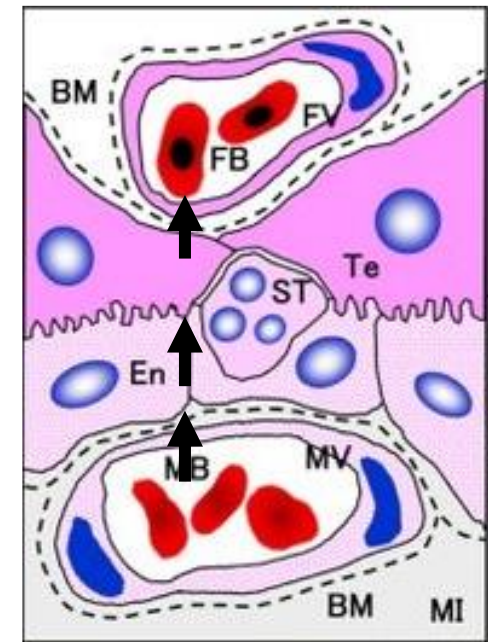
oviductos



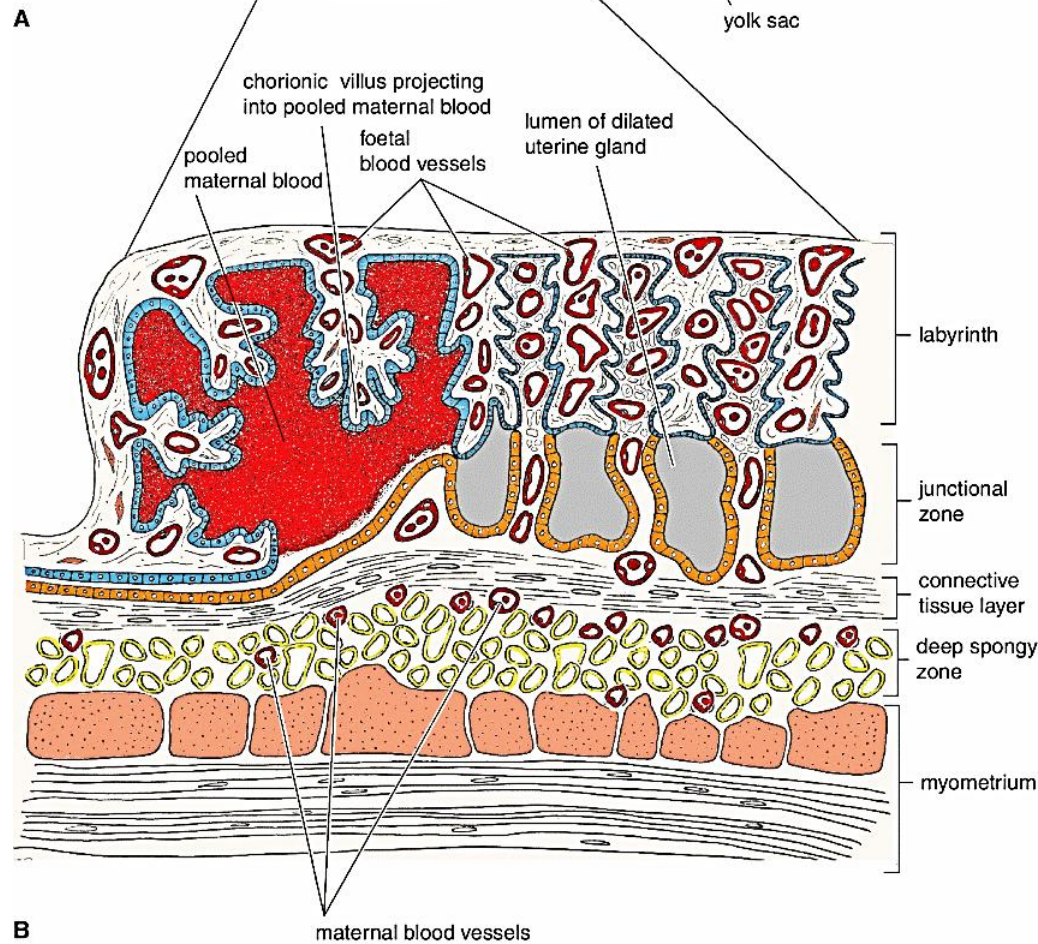
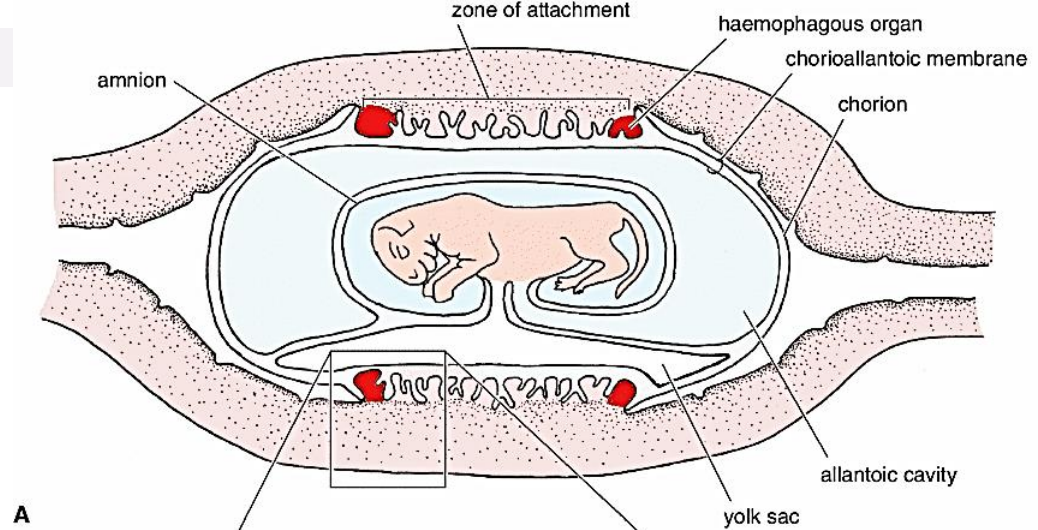
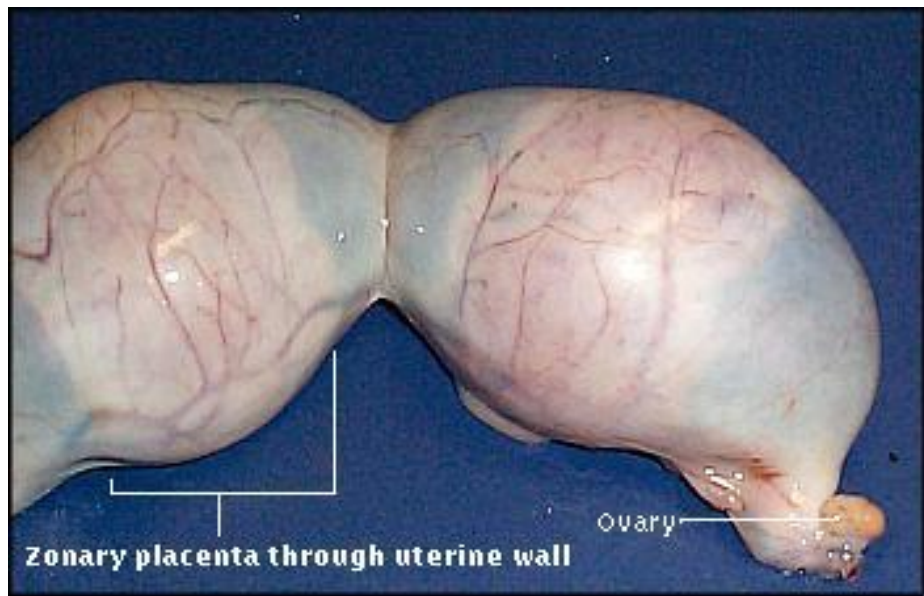
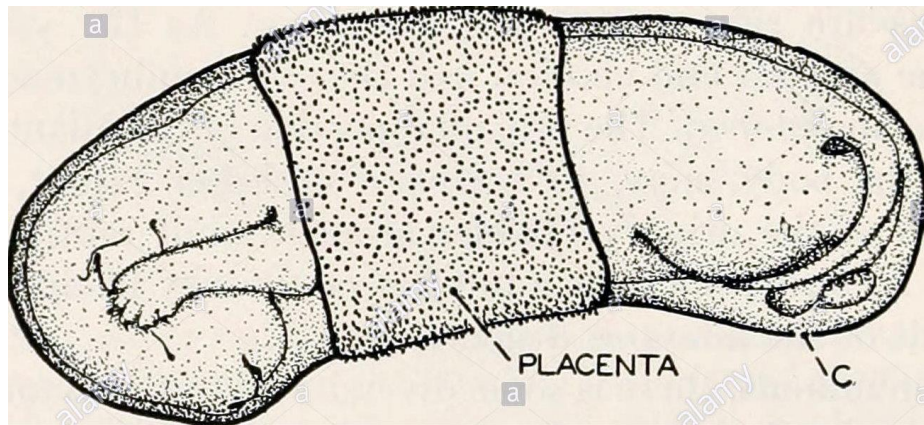
A**B**

**Placenta
cotyledonar**

**Conjuntivo
corial**



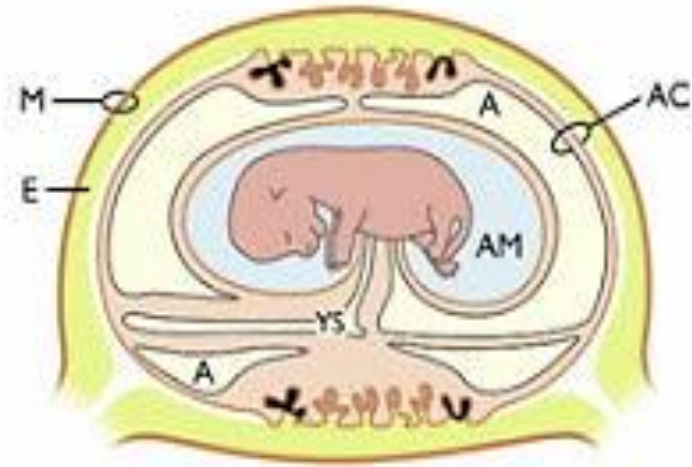
a'. Syndesmochorial type



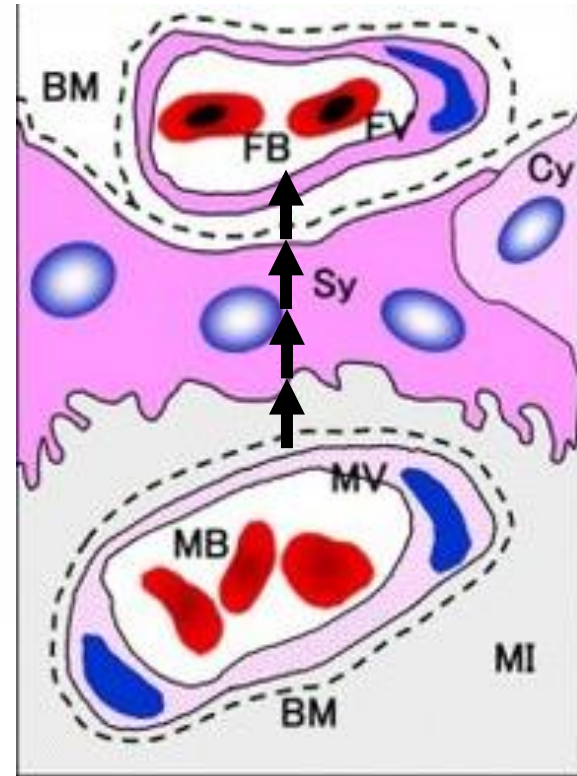
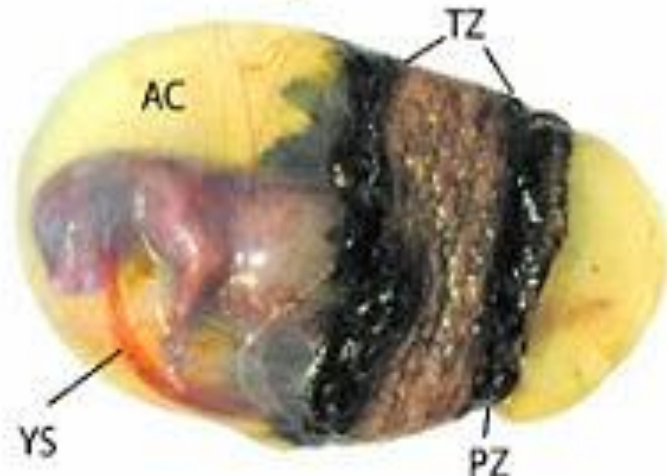
B

Bitch

Placenta zonal

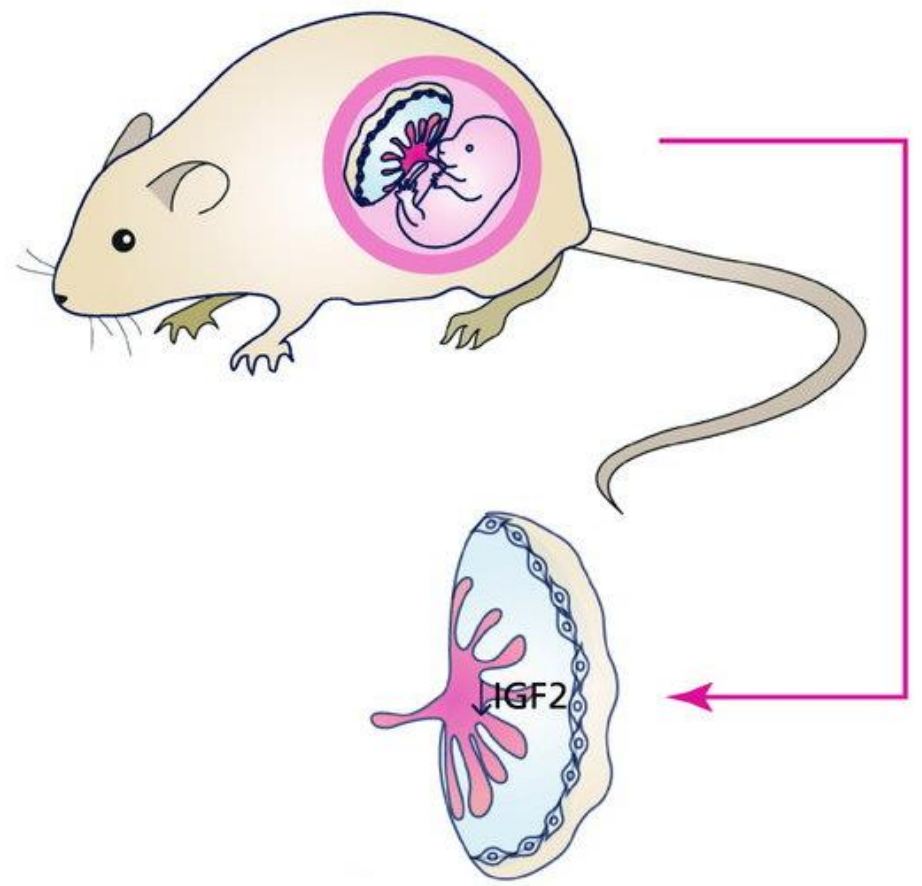
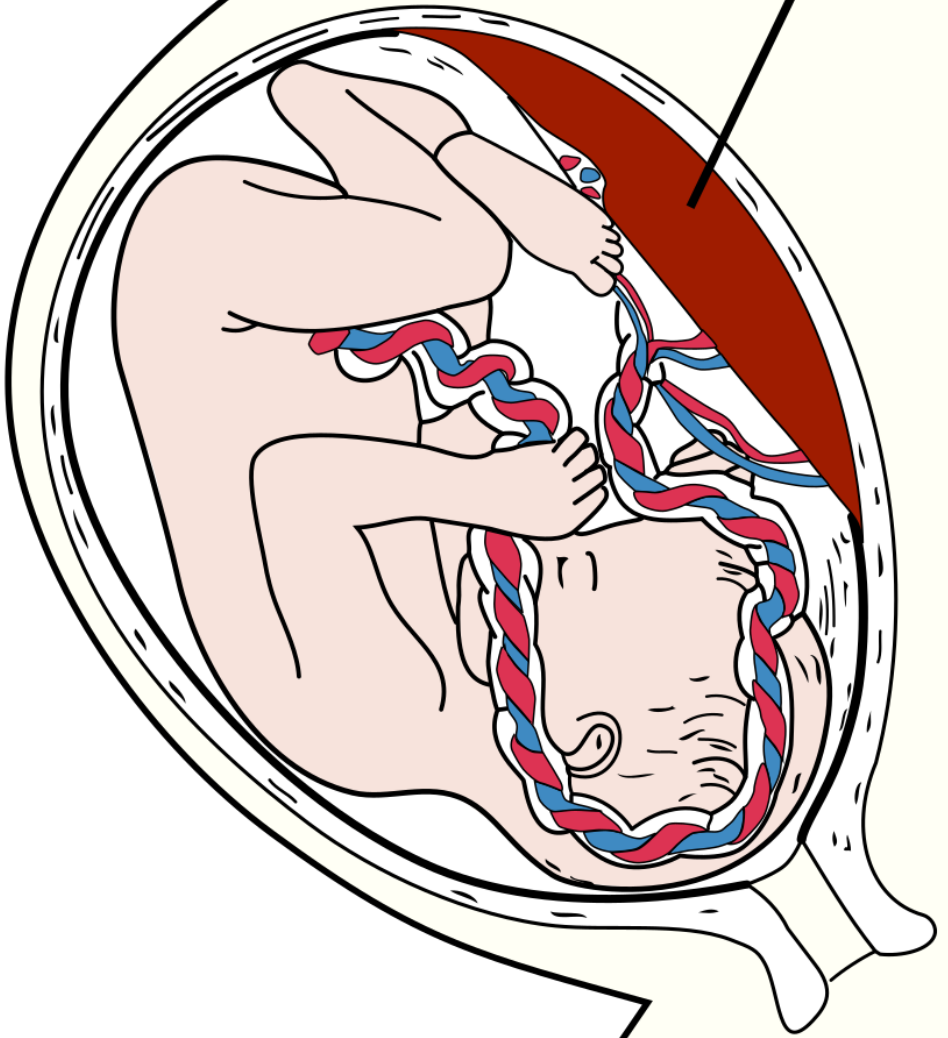


Endotelio corial



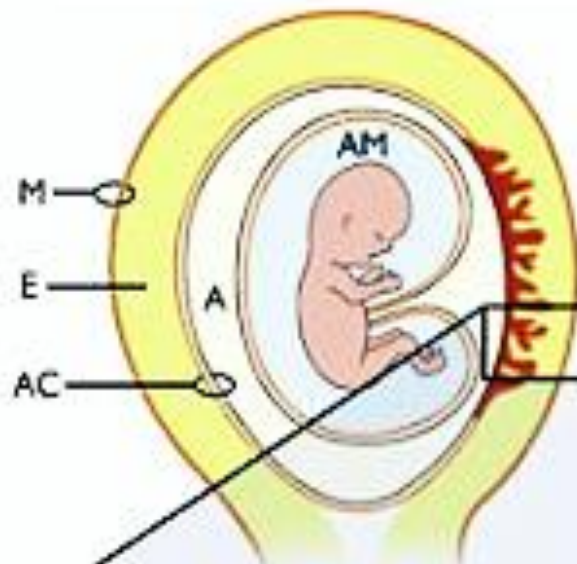
b. Endotheliochorial type

Placenta

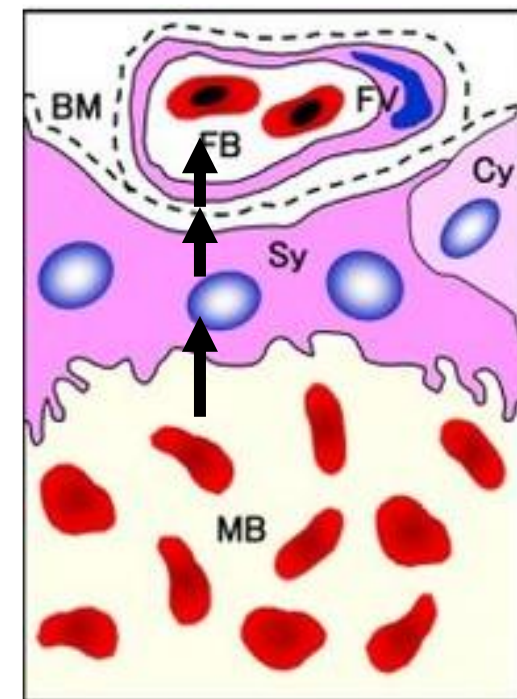
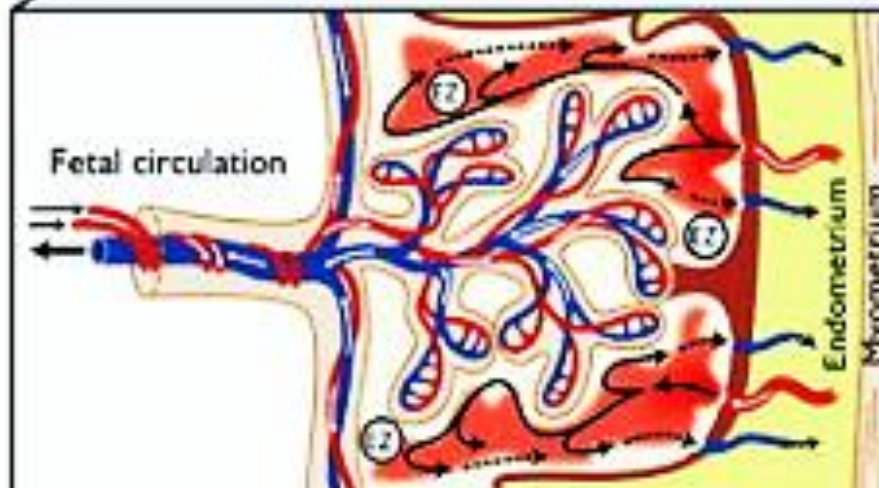


Primates

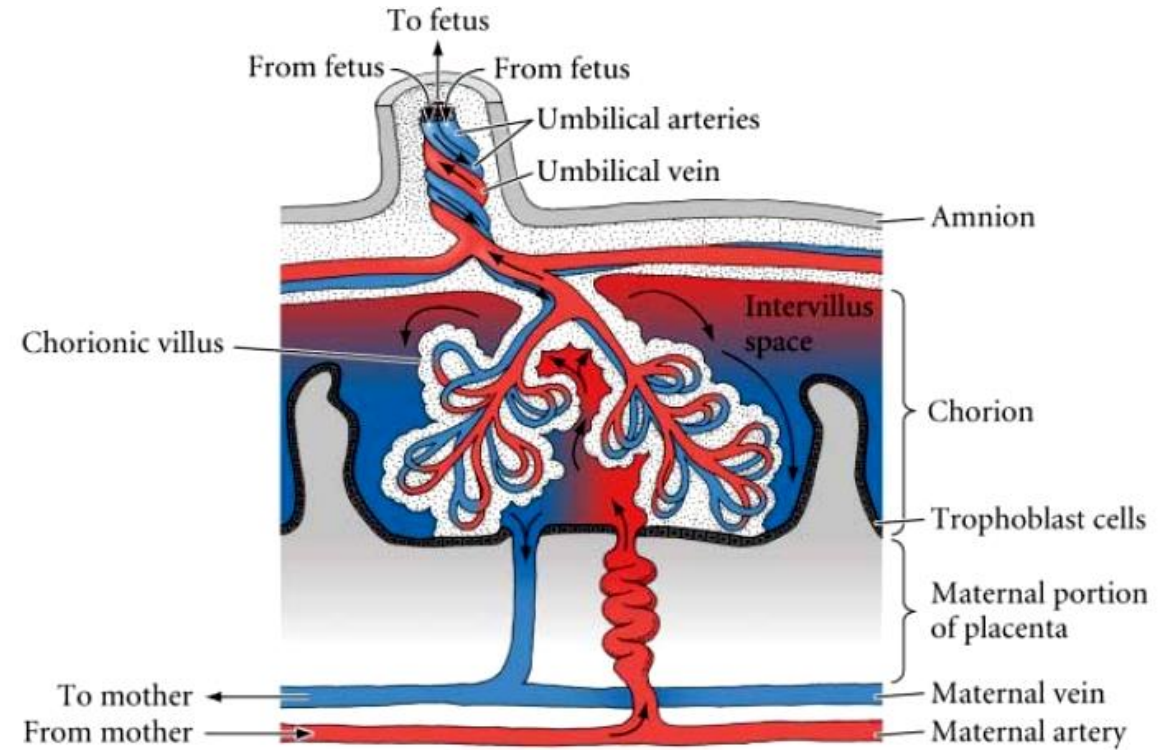
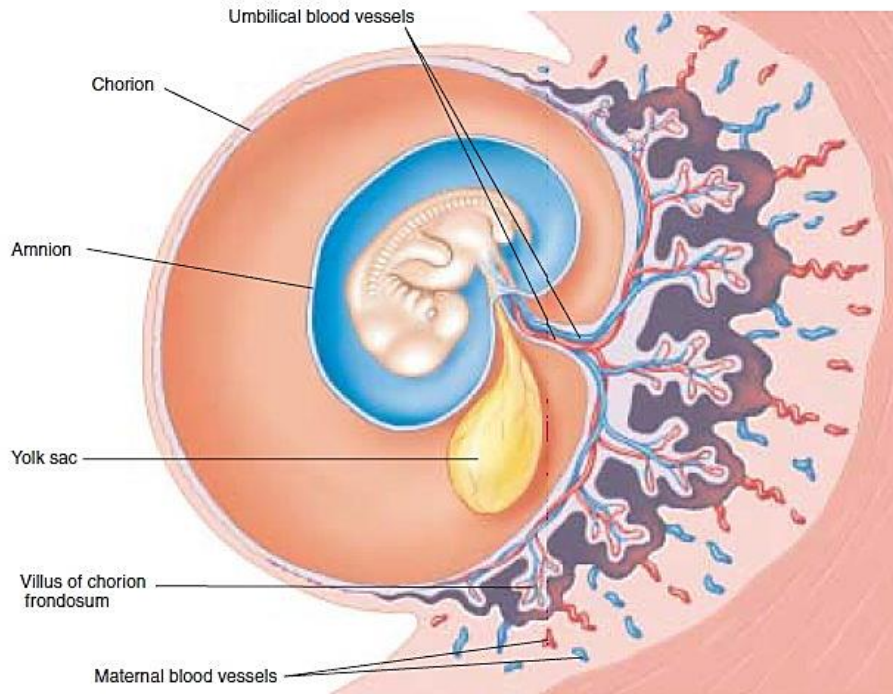
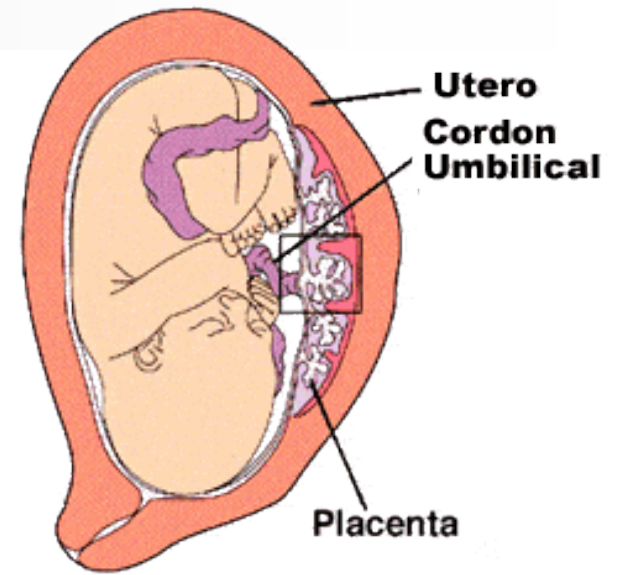
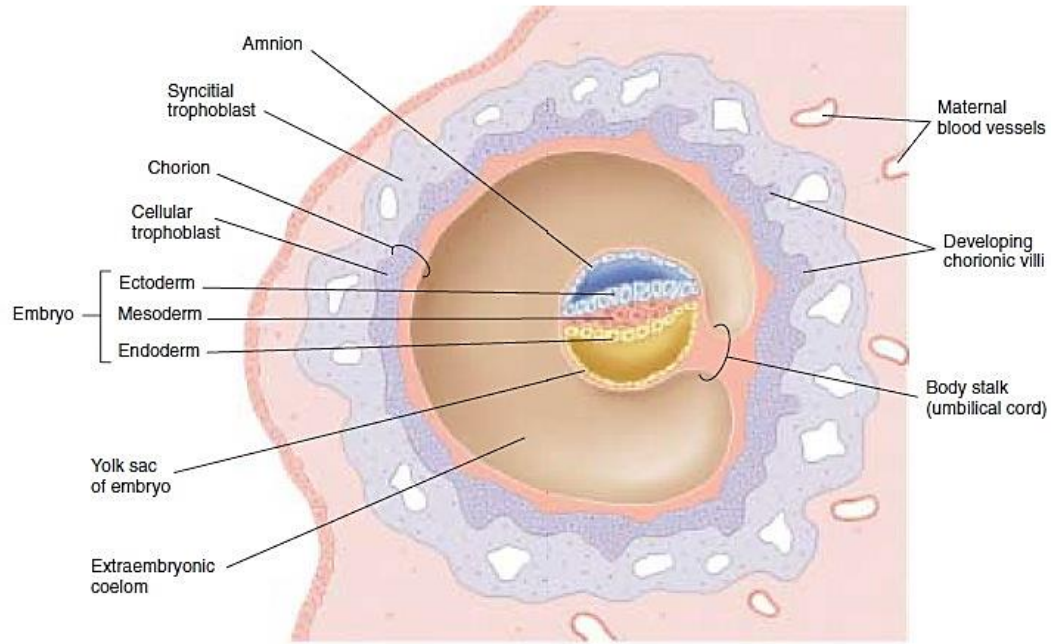
Placenta discoidal

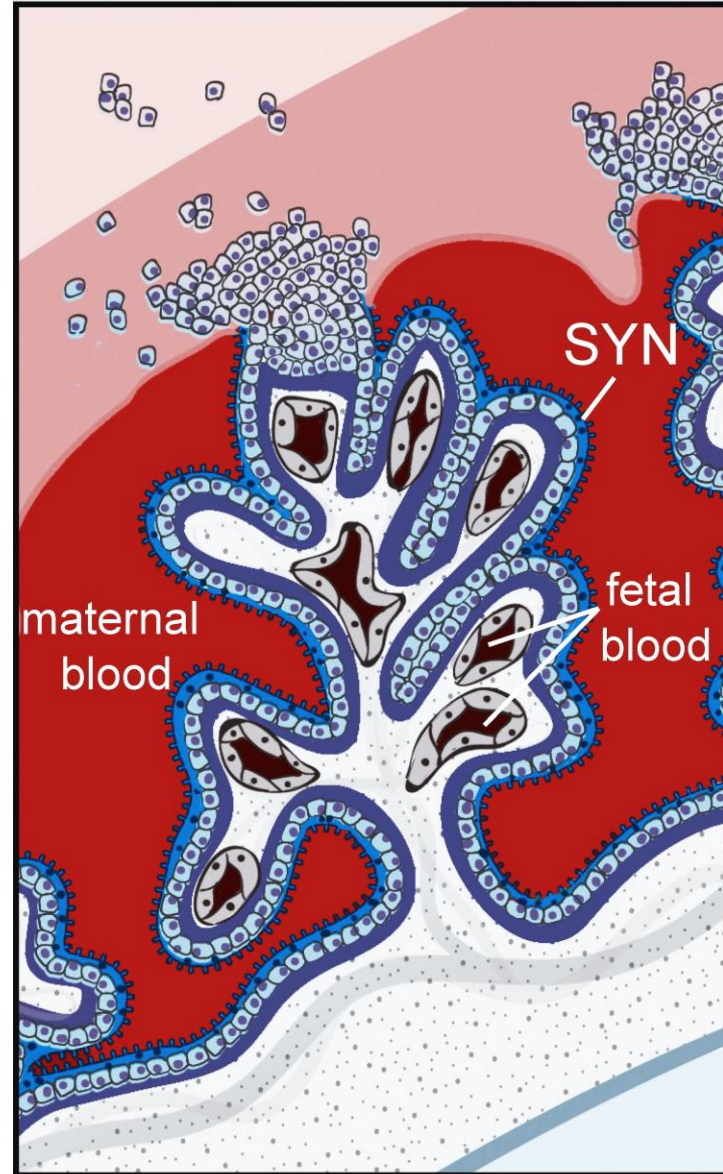
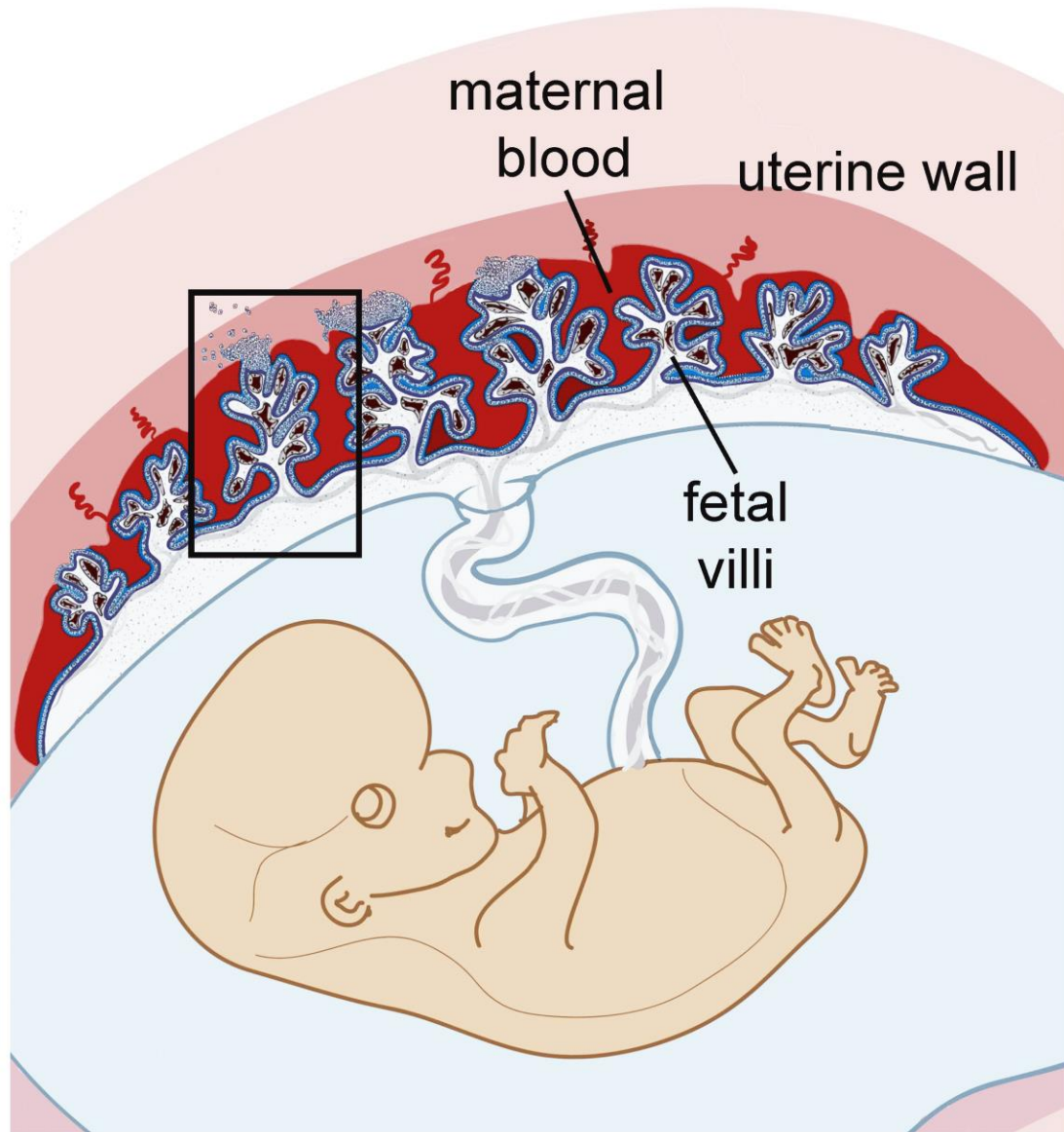


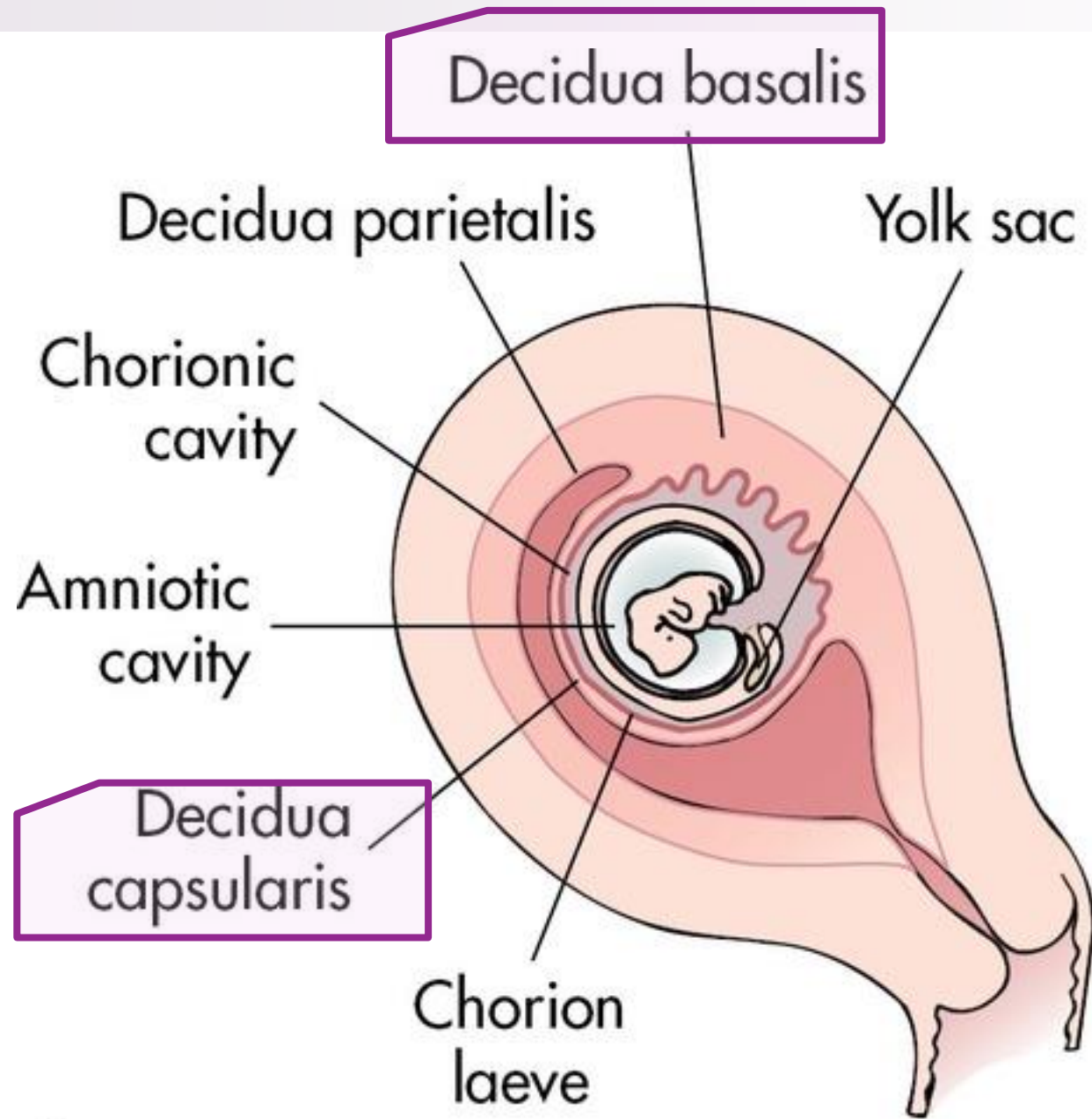
Hemochorial



c. Hemochorial type







A



