

## PCB EN ARES

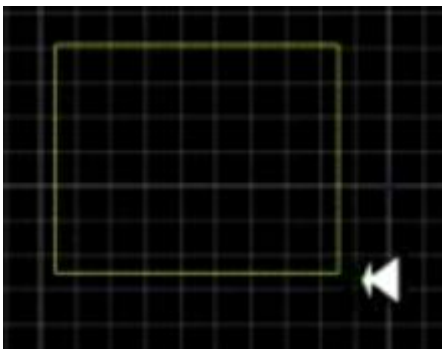


SISTEMA MÉTRICO (M)  
Espacio de 1 mm



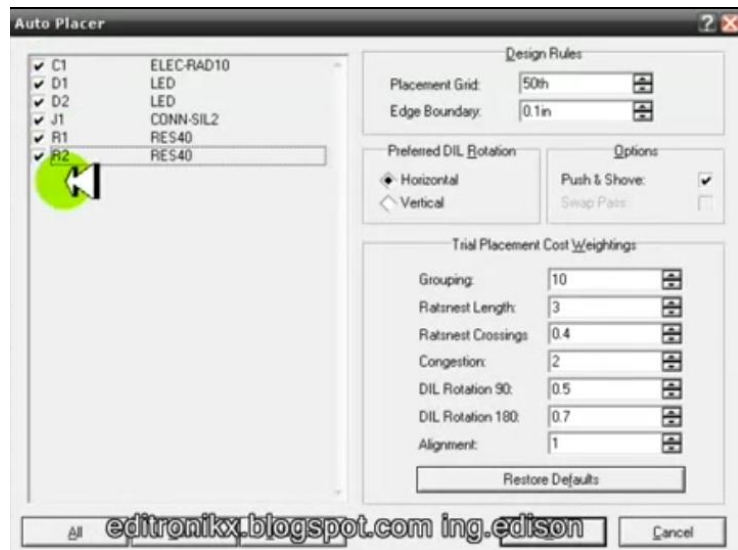


Board Edge



## Auto Placer

Ok



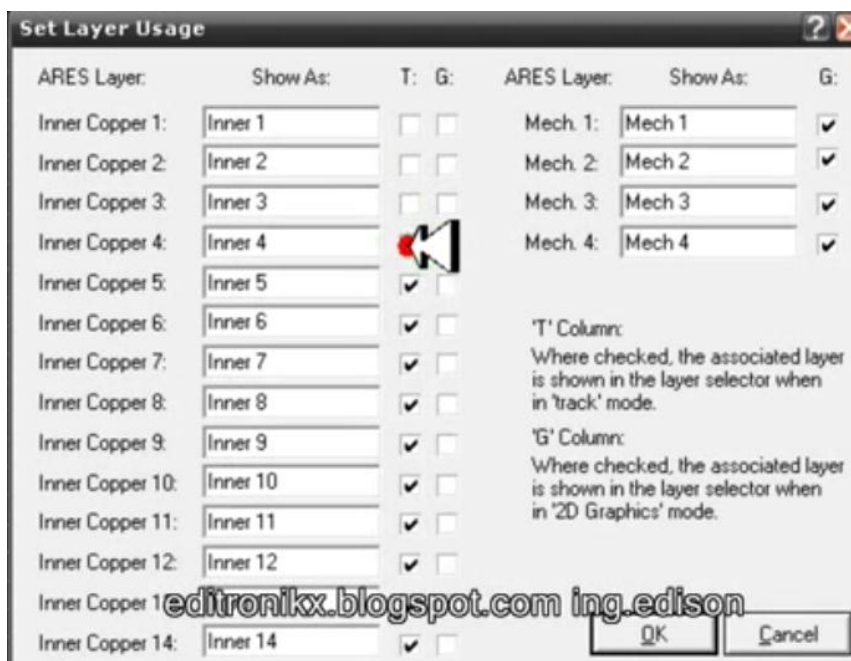
Disminuir tamaño de la placa



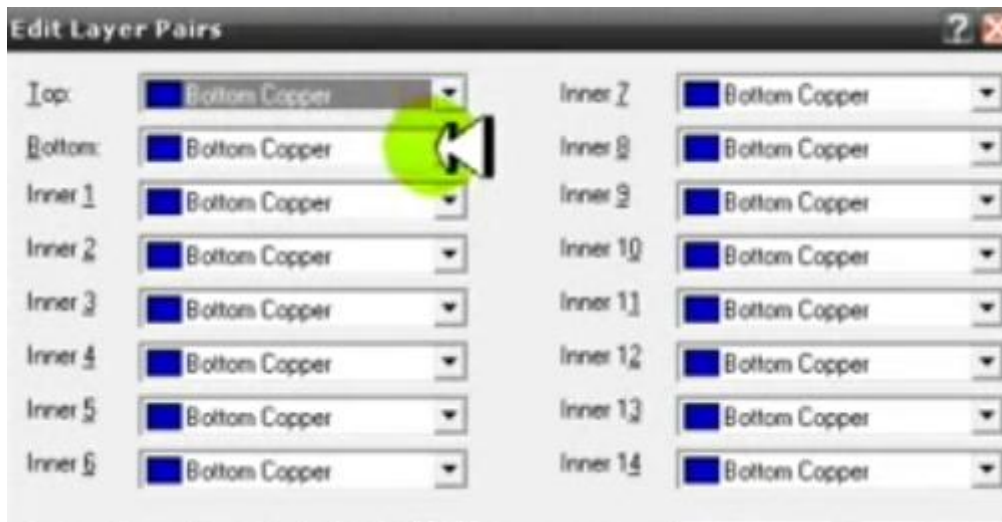
## Configurar ARES

Technology – Layer Usage

Se quita toda la selección, porque es una sola capa



Technology Layer Pair  
Todo en Bottom Copper



Technology - Design Rules  
Pad, tamaño 20



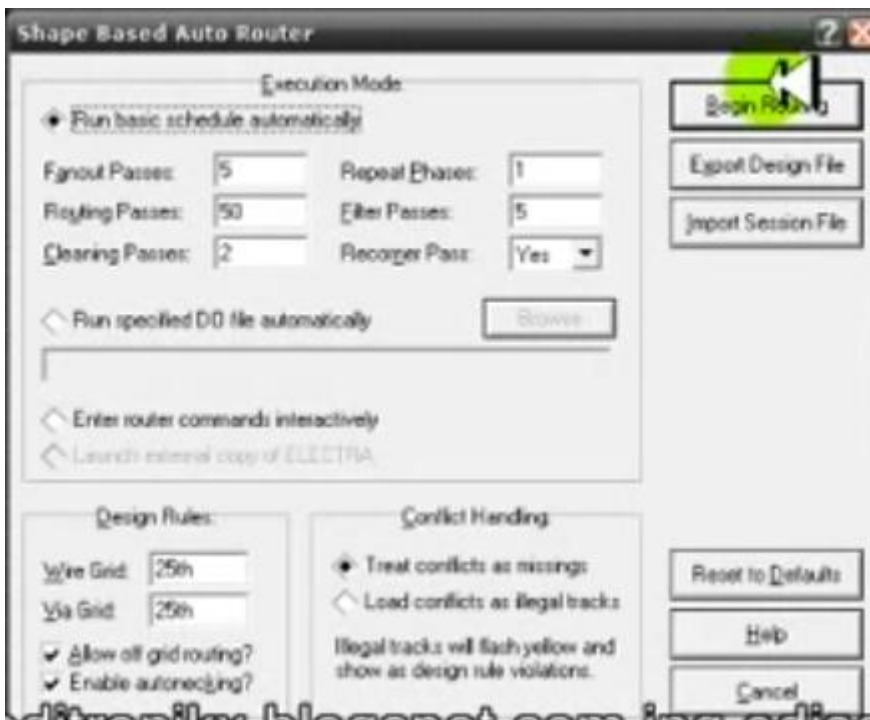
Net Classes:  
Power y Signal: Bottom Cooper

Trace Mode

Default – E: 35th

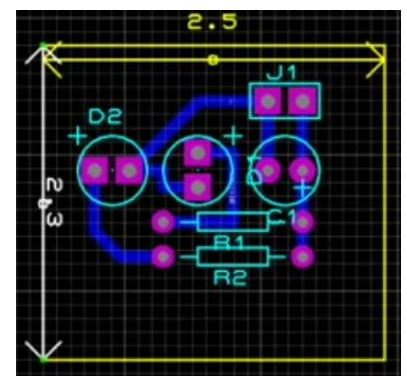


Auto Router: Begin Routing



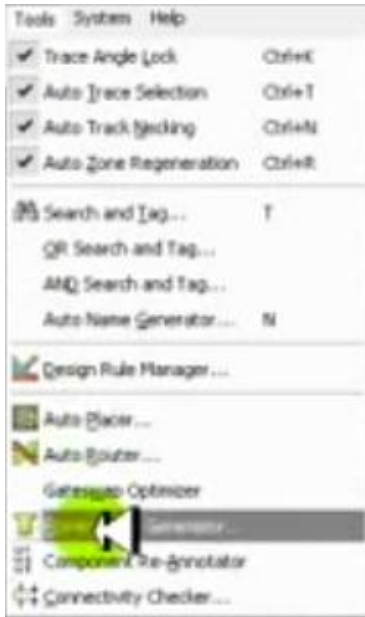
Tamaño de la Board

Clic derecho, Propiedades: %C (cm)



Conexión a Tierra para evitar ruidos

Tools – Power Plane Generator

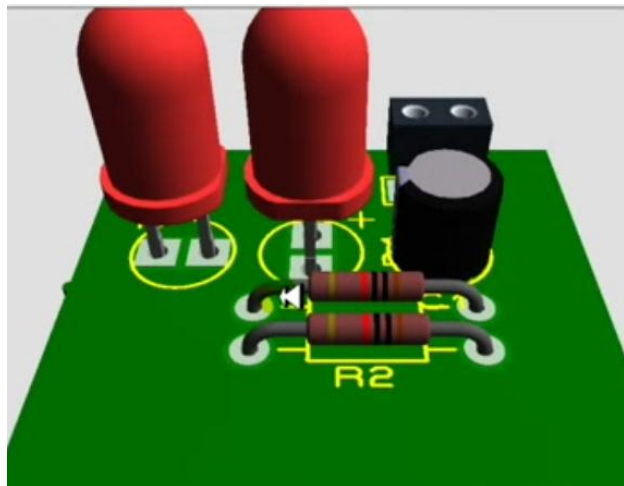
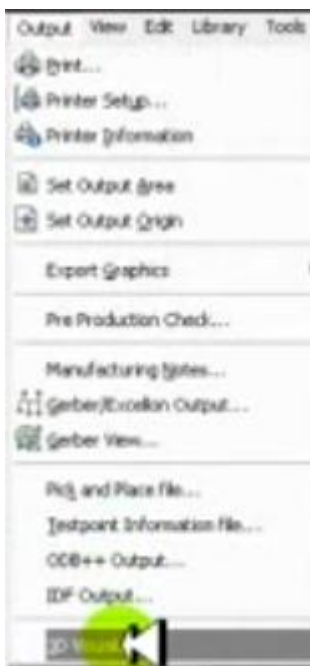


Ploter o Ruteo: GND=Power, 50th



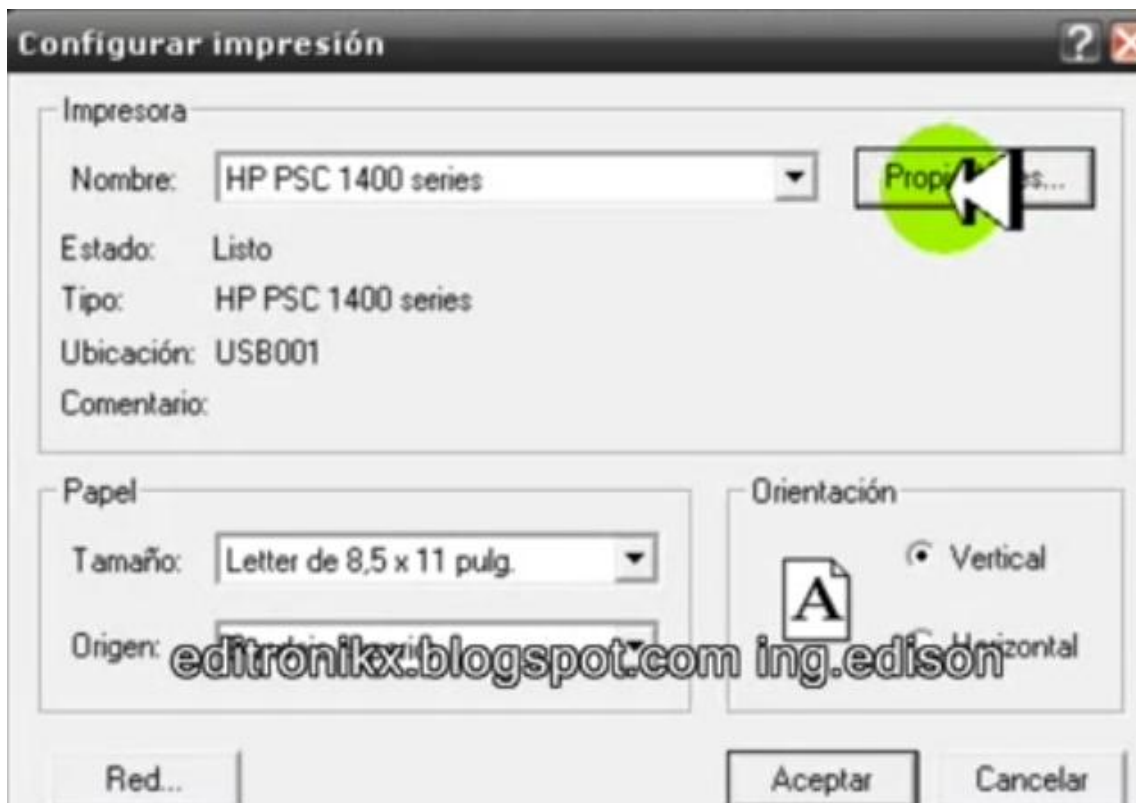
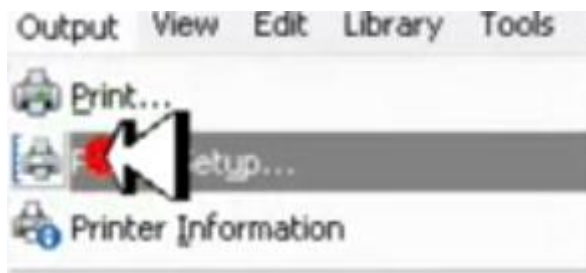
Visualización

Output 3D Visualization

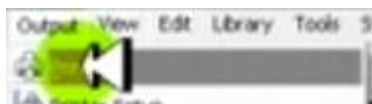


## IMPRIMIR EL CIRCUITO

Output Printer Setup: configurar a negro-color



Out Print



Bottom Cooper

